

PT

MAPPING THE POTENTIAL
OF **PORTUGAL** FOR THE
BIO-BASED INDUSTRY

Updated - September 2018



TABLE OF CONTENT

Executive summary	7
1. Introduction	9
1.1 Geographic Note	9
1.2 Sources	10
1.3 Disclaimer	10
2. Policy framework	12
3. Biomass production	15
3.1 Agriculture	16
3.2 Forest.....	28
3.3 Blue Economy	30
4. Current and potential users of biomass	34
4.1 Food industry	34
4.2 Leather goods.....	37
4.3 Wood and cork	37
4.4 Pulp and paper	39
4.5 Chemical and petrochemical industry	43
5. Clusters and associations	46
6. Campus, incubators and technology parks	49
7.1 MultiBiorefinery (ongoing)	53
7.2 Bio-ware (ongoing).....	53
7.3 Centro Bio (ongoing).....	53
7.4 Blueandgreen (ongoing).....	53
7.5 D-Factory: The Micro Algae Biorefinery (concluded)	53
7.6 BIOFAT (concluded).....	53
7.7 Biocombus (concluded)	54

7.8 BioCec (concluded).....	54
7.9 BIIPP (concluded)	54
7.10 Bioblad (concluded)	54
7.11 Rose4Pack (concluded).....	54
7.12 POTATOPLASTIC (concluded)	54
7.13 ABACUS (ongoing)	55
7.14 AFTERLIFE (ongoing).....	55
7.15 BIOBRIDGES (ongoing)	55
7.16 BIOWAYS (ongoing)	55
7.17 FUNGUSCHAIN (ongoing)	55
7.18 LIBBIO (ongoing).....	55
7.19 MAGNIFICENT (ongoing).....	55
7.20 PROVIDES (ongoing)	55
7.21 ReInvent (ongoing).....	56
7.22 SUSBIND (ongoing).....	56
7.23 WoodZymes (ongoing)	56
7.24 Bioblocks (concluded).....	56
7.25 NMC – Novos Materiais Celulósicos (concluded).....	56
8. Market actors: brand owners and consumer groups	58
8.1 Brand owners	58
8.2 Consumer groups.....	59
9. Conclusions.....	61
Appendix A: Members of National Industry Clusters.....	63
10.1 Portugal Foods.....	63
10.2 InovCluster	67
10.3 Agrocluster	70
10.4 Portugal Fresh	71

10.5 Fórum Oceano	73
10.6 Centro Habitat.....	79
10.7 EnergyIn	80
10.8 AIFF	80
10.9 SMARTWASTE	82
10.10 AIPQR.....	83
Appendix B.....	86

LIST OF TABLES

Table 3.1: Main agricultural productions in Portugal, per Region – annual crops (from).....	18
Table 3.2: Main agricultural productions in Portugal, per Region – perennial crops (from).....	19
Table 3.3: Agricultural residues per region.....	20
Table 3.4: Main players (from AEP’s Top 50 Companies in the sector “Agriculture and forestry”, category “agriculture”)	20
Table 3.5: Agricultural residues per species, annual crops (2002 data)	21
Table 3.6: Olive residues per region (2012 data)	22
Table 3.7: Members of “Casa do Azeite”	23
Table 3.8: Main players (from AEP’s Top 50 Companies in the sector “Food”).....	24
Table 3.9: Wine producing regions in Portugal.....	25
Table 3.10: Winery residues per region (2012 data).....	25
Table 3.11: Main players (from AEP’s Top 50 Companies in the sector “Agriculture and forestry”, category “livestock”)	26
Table 3.12: Main forest productions in Portugal, per region (thousand hectares)..	30
Table 3.13: Forest residues per species.....	30
Table 3.14: Main players (from AEP’s Top 50 Companies in the sector “Agriculture and forestry”, category “forest”).....	30
Table 3.15: Main players (from AEP’s Top 50 Companies in the sector “Aquaculture and fishery”)	31

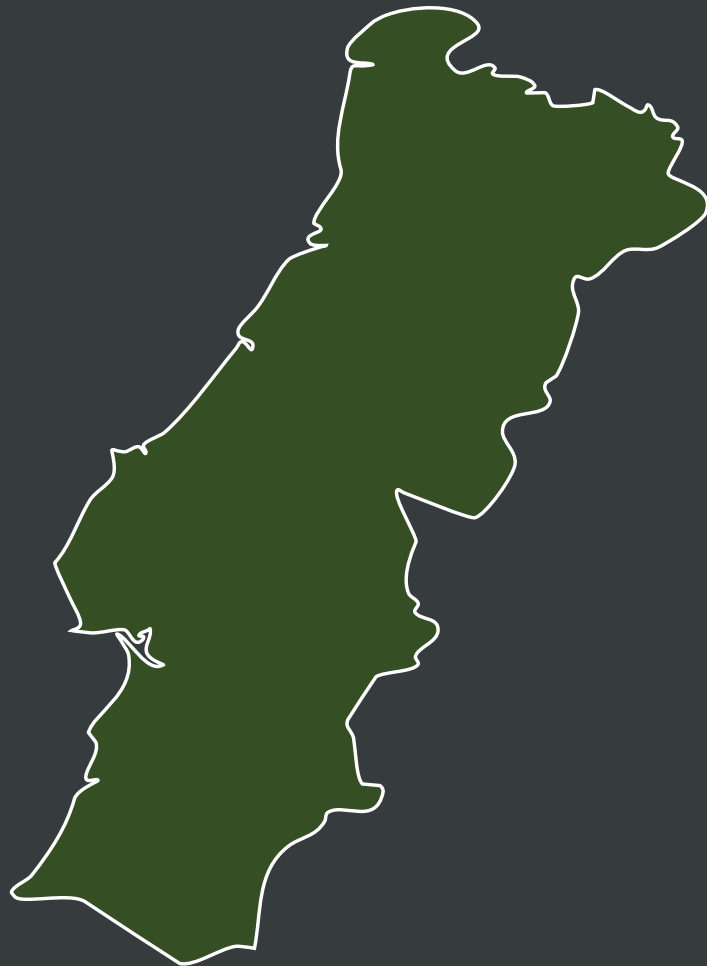
Table 4.1: Main players (from AEP’s Top 50 Companies in the sector “Food”).....	35
Table 4.2: Main players (from AEP’s Top 50 Companies in the sector “Food”).....	35
Table 4.3: Main players (from AEP’s Top 50 Companies in the sector “Food”).....	36
Table 4.4: Main players (from AEP’s Top 50 Companies in the sector “Food”).....	36
Table 4.5: Main players (from AEP’s Top 50 Companies in the sector “Food”).....	37
Table 4.6: Main players (from AEP’s Top 50 Companies in the sector “Food”).....	37
Table 4.7: Main players (from AEP’s Top 10 Companies in the sector “Leather”).....	38
Table 4.8: Main players (from AEP’s Top 50 Companies in the sector “Wood and cork”).....	39
Table 4.9: Main players (from AEP’s Top 50 Companies in the sector “Pulp and paper”).....	40
Table 4.10: Main players (from AEP’s Top 50 Companies in the sector “Chemical and petrochemical industry”).....	44
Table 6.1: Campus, incubators and technology parks.....	51
7. Research projects.....	54
Table 8.1: Major brand owners of Portugal (adapted from)	59
Table b1: Producers of annual crops (from IFAP’s directory)	87
Table b2: Producers of fruit (from IFAP’s directory)	90
Table b3: Producers of olive oil (from IFAP’s directory)	93
Table b4: Producers of wine (from IFAP’s directory).....	93
Table b5: Producers of covine meat (from IFAP’s directory).....	93
Table b6: Producers of caprina or ovine meat (from IFAP’s directory).....	94
Table b7: Producers of swine meat (from IFAP’s directory).....	94
Table b8: Producers of poultry meat (from IFAP’s directory)	95
Table b9: Producers of dairy products (from IFAP’s directory).....	95
Table b10: Fisheries	95
Table b11: Chemical industry	97

LIST OF FIGURES

Figure 1.1: Map of Portuguese Regions	10
Figure 3.1: Biomass production areas in Portugal	16
Figure 3.2: Agriculture and livestock production areas	17
Figure 3.3: Forestry in Portugal	29
Figure 3.4: Areas allocated for aquaculture development (left, in blue); actual aquaculture establishments in Algarve (right, in green).....	33

00

EXECUTIVE
SUMMARY



Executive summary

This document is the first in a series of publications by the Bio-based industries consortium (BIC) to identify the opportunities for expanding the bio-based industry across Europe. The incentive for looking into these opportunities is the fact that the level of activities of BIC is not balanced throughout Europe. Bio-based activities heavily depend on innovation, and hence are relatively low in ‘moderate/modest innovator’ countries¹. This may be the result of insufficient knowledge of the potential for the bio-based industry in these countries, by actors in bio-based activities in these countries as well as by BIC. Additionally, actors in these countries may not be fully aware of the opportunities offered by BIC and the Bio-based Industries Initiative.

The document highlights the results of the mapping exercise of local biomass sources that could be used as sustainable feedstock for the bio-based industry, and the major actors in the relevant sectors.

Portugal is home to large industrial activities in the primary sectors agri-food, forestry, aquaculture and fisheries industries. Together with the manufacturing of cork products and leather goods, these sectors are significant contributors to the national economy. These activities also result in abundant quantities of residual streams, all being potential feedstock for the bio-based industry. Their quantities would justify deployment of full-scale biorefineries for their valorisation. Challenges to be resolved are the mostly small-scale operation of agricultural actors, their scattered locations across the country.

Portugal does not have a dedicated national strategy supporting a wider uptake of bioeconomy and circular economy actions. However, bioeconomy is embedded in several recent action plans and initiatives, positive steps in the ongoing policy process towards a national strategy.

In addition, there are initiatives to develop bio-based value chains such as Blue Bio Value, an accelerator that scales up marine bio-based solutions to global market applications, or All, an association that promotes the Portuguese bioeconomy and circular economy.

With the abovementioned strong primary sectors, the presence of high-level research institutions, including centres of excellence for biotechnology and microalgae, a national bioeconomy strategy could provide the needed impetus for bio-based industrial activities in Portugal in a relatively short time span.

To achieve a wider uptake of the bioeconomy and circular economy, actions are needed in 4 areas: Network and capacity building; Innovation & entrepreneurship; Public awareness and Access to finance/public funding.

BIC will now share this document with the local actors, and jointly set up an action plan, in particular with the industry and governmental institutions, to provide assistance in expanding the local bio-based industry.

¹ See European Innovation Scoreboard 2017: http://ec.europa.eu/growth/industry/innovation/facts-figures/scoreboards_en

01



INTRODUCTION

1. Introduction

Portugal has a significant bioeconomy potential.

Its agro-food and forestry sectors have traditionally been among the key sectors of the national economy, as well as fishery. The vast amount of by-products and residues from these primary sectors and the related processing industries are candidate sources of biomass feedstock for the bio-based industry and the bioeconomy.

Portugal possesses also high level research facilities on bio-based products and materials in the universities of Aveiro, Braga, Coimbra, Lisboa, Faro, Porto and Tras-os-Montes/Alto-Douro.

Portugal does not have a national bioeconomy strategy yet. The term “bioeconomia” itself is often restricted to the domains of biotechnology and life sciences. Nevertheless, references to single topics within the broader definition of bioeconomy are recurring in its national Smart Specialisation Strategy and in strategic action plans.

Portugal’s bioeconomy pattern is geared towards biomass-producing sectors and the manufacture of food, beverage and tobacco sector². The manufacture of wood products, furniture and paper sectors generate one-quarter of the bioeconomy value added in Portugal while employing only 11% of the bioeconomy labour force. The manufacture of bio-based textiles contributes more to the bioeconomy labour market in Portugal (17%), than on average in the EU (5.5%). More labour-productive sectors, such as the manufacture of paper and the manufacture of bio-based chemicals, pharmaceuticals, plastics and rubber, are not very developed. The apparent labour productivity in all bioeconomy sectors is lower than the EU-28 average, except in the Portuguese forestry sector. Therefore, there remains a large potential for the development of the bioeconomy.

This is in line with the research and innovation (R&I) bioeconomy index calculated in 2017³. This index refers to the bioeconomy R&I maturity level of a given country or region. It derives from four variables: (i) the innovation capacity and activity, (ii) the existence of a specific bioeconomy strategy, (iii) the existence of bioeconomy-related clusters and (iv) the intensity level of bioeconomy-related activities. Portugal has a bioeconomy maturity index level of 6/10.

1.1 Geographic Note

For the purpose of this document, the Portuguese territory is divided as per the map below.

Figure 1.1: Map of Portuguese Regions



² Ronzon and M'Barek, 2018. Socioeconomic Indicators to Monitor the EU's Bioeconomy in Transition. <http://www.mdpi.com/2071-1050/10/6/1745/htm>

³ Spatial Foresight: Bioeconomy development in EU regions, 2017. https://ec.europa.eu/research/bioeconomy/pdf/publications/bioeconomy_development_in_eu_regions.pdf

Due to the lack of uniformity between Portugal's administrative and geographic divisions, the division in Regions is largely arbitrary and definitions are sometimes conflicting in source documents; in particular:

- the district of Leiria is usually referred to Centro, but parts of it are sometimes adjoined to Lisboa e Vale do Tejo for their geographical proximity to the capital. Within this document, Leiria is always assigned to Centro;
- the district of Setubal is usually referred to Lisboa e Vale do Tejo, but parts of it are sometimes adjoined to Alentejo for their geographical and landscape proximity to the latter. Within this document, Setubal is always assigned to Lisboa e Vale do Tejo;
- the district of Santarèm is often split between Lisboa e Vale do Tejo, Centro and Alentejo. Within this document, it is always assigned to Lisboa e Vale do Tejo.

Whenever possible, sources have been harmonised to the criteria above. However, it's possible that aggregate data reflect slightly different geographic scopes.

1.2 Sources

Economic data are retrieved from the following sources:

- AEP - Associação Empresarial de Portugal, Câmara de Comércio e Indústria;
- IFAP - Instituto de Financiamento da Agricultura e Pescas, I.P.;
- CONFAGRI - Confederação Nacional das Cooperativas Agrícolas e do Crédito Agrícola de Portugal, CCRL;
- INE - Instituto Nacional de Estatística, I.P.;
- ICNF - Instituto da Conservação da Natureza e das Florestas, I. P.;
- GPP - Gabinete de Planeamento, Políticas e Administração Geral;
- FPAS - Federação Portuguesa de Associações de Suinicultores;
- IVV - Instituto da Vinha e do Vinho.
- DGPM - Direção-Geral de Política do Mar do Ministério do Mar

1.3 Disclaimer

This report was prepared by RINA Consulting on behalf of the Bio-based Industries Consortium (BIC). It was further updated by BIC in September 2018 following updates received via Portugal's State Representative at the Bio-based Industries Joint Undertaking (BBI JU).

The information and views set out in this report are those of the author(s) and do not necessarily reflect the official opinion of the Bio-based Industries Consortium. Neither the Bio-based Industries Consortium nor any person acting on its behalf may be held responsible for the use which may be made of the information contained therein.

02

**POLICY
FRAMEWORK**

2. Policy framework

Portugal does not have a national/regional strategy dedicated to bioeconomy. Bioeconomy is however embedded in several national strategies, action plans and initiatives.

An Interministerial "Action Plan on Circular Economy" (2017-2020) and the "National Plan for the Promotion of Biorefineries"⁴ (2017-2030) are some of the recent positive steps in the ongoing policy process towards a national strategy. The "National Ocean Strategy (2013-2020)"⁵ also makes reference to bio-based developments and identified blue energy, aquaculture and marine biotechnology as part of five strategic areas of preferential intervention.

A statement by the Minister of Agriculture L. Santos in December 2016, opened the possibility of government incentives for producing biofuels from forest residues, in addition to the current energy use.

Portugal published its Smart Specialisation Strategy⁶ in 2015. Bioeconomy is not treated as a single topic but rather scattered across different themes. Two regional strategies make specific reference to bioeconomy: "RIS3 do Centro de Portugal"⁷ and "Madeira 2020"⁸.

BlueBio Alliance, Oceano Azul Foundation and Calouste Gulbenkian Foundation have joined efforts to promote the value of the sea, its natural capital and its environmental and economic sustainability through the creation of the **Blue Bio Value**⁹ Programme, a three-year acceleration program for projects and startups linked to the blue bio economy. It is the first accelerator that scales up marine bio-based solutions to global market applications in different industries.

The recently launched association "**All** - Associação Portuguesa para a Bioeconomia e Economia Circular"¹⁰ aims to promote the Portuguese bioeconomy and circular economy.

From the biomass production side, the need of a holistic approach integrating and harmonising different sources of biomass is clear. Energy use is predominant, but references to biofuels and biomaterials are made. It must be noted that the term "*biomassa*" is always used with the meaning of "residual biomass" in Portuguese documents.

Axis 1, "Commodities and materials", considers residual biomass from agriculture, forest and food processing mostly as a potential source of energy. Biofuels are mentioned as well, but no reference is made to biochemicals or (advanced) biomaterials.

Axis 2, "Product and process technologies", features a "Green chemistry" topic focusing on re-use of products and raw materials, energy efficiency and efficient chemical processes.

Axis 3, "Transport, space and logistics", mentions "new fuels" as an innovation area.

Axis 4, "Natural resources and environment", features topics about "energy efficiency, reduction and reuse

4 <http://www.ineg.pt/download/13177/i015160.pdf>

5 https://issuu.com/dgpm_portugal/docs/nos2013_2020

6 <http://s3platform.jrc.ec.europa.eu/regions/pt>

7 <https://www.portugal2020.pt/Portal2020/Media/Default/Docs/EstrategiasEligentes/EREI%20Centro.pdf>

8 <https://ec.europa.eu/growth/tools-databases/regional-innovation-monitor/policy-document/madeira-2020-regional-smart-specialisation-strategy-ris3>

9 <https://www.bluebiovalue.pt>

10 http://www.bioec.pt/#about_us

of rural residues” and “advanced technologies (biotechnologies, synthetic biology)” under the Agro-food theme; topics about “sustainable production of raw and derived materials from forest (including reduction of residues and re-use of biomass)” under the Forestry theme; topics about “resource efficiency, valorisation of by-products and smart packaging” under the Marine theme. Waste is also treated under Axis 4, with a topic about waste treatment and valorisation systems.

Axis 5, “Health and wellbeing”, features a reference to biomaterials both under the Health theme and under the Habitat theme.

At regional level, some elements of bioeconomy can be found in all regional priorities for a smart specialisation. As can be expected, blue economy is one of the recurring themes:

- Norte has “maritime resources and environment” as one of its development lines; Norte has a joint cross-border smart specialisation strategy with Galicia (Spain)
- Centro mentions “agro industry” and “blue economy”;
- Lisboa e Vale do Tejo is the only one mentioning “biotechnology” in addition to “blue economy”;
- Alentejo has “blue economy”, “agro and forestry” and “food industry”;
- Algarve mentions “blue economy” and “fisheries”;
- Açores couples “blue economy” with “food industry”;
- Madeira features “maritime biosustainability” as a them.

03

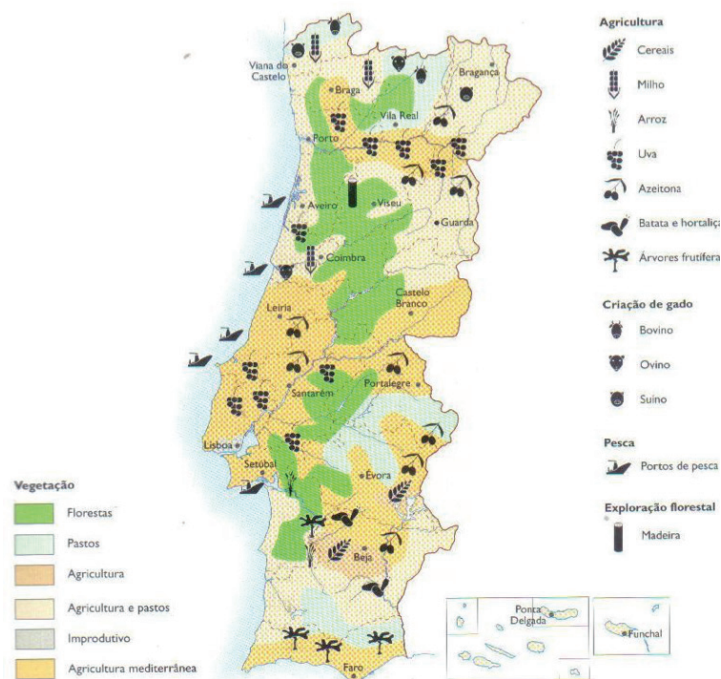
**BIOMASS
PRODUCTION**

3. Biomass production

Portugal produces biomass from the following sectors:

- Agriculture;
- Forestry;
- Livestock;
- Fishery;
- Municipal Solid Waste.

Figure 3.1: Biomass production areas in Portugal¹¹



Dedicated crops are negligible. Residual biomass mostly finds conventional, low value use. Agricultural residues are usually employed “as they are” in animal feed or spread on field. Forest residues usually go into energy. Algal biomass (algae and seaweed) is produced for food and for nutraceutical applications. Microalgae are cultivated in ponds and photobioreactors Centro and in the South; however production is low.

Biogas and biomethane appear mostly in small scale installations. In this respect, Portugal is behind most European countries. Residues from the swine industry fuel most of the biogas plants.

The Portuguese government recently (December 2016) opened the utilisation of forestry residues for production of biofuels, in particular biodiesel. No actual project has however started yet¹².

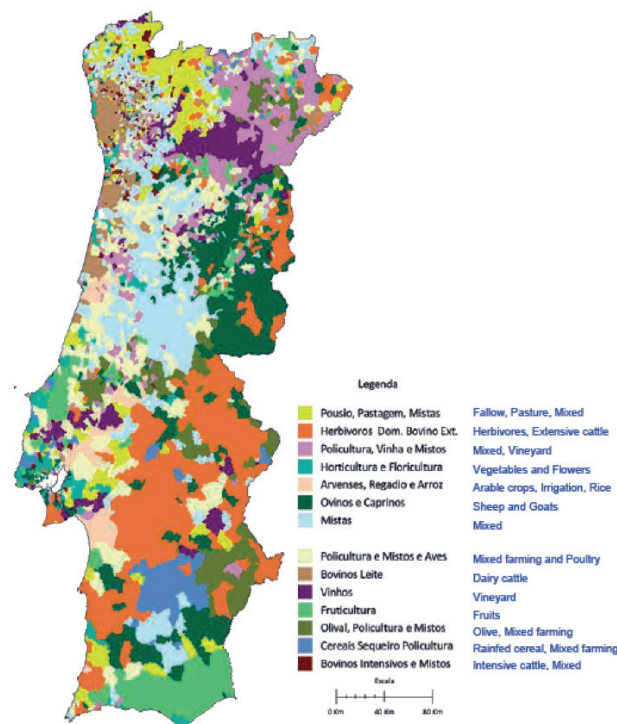
¹¹ http://cpu90.ifc-camboriu.edu.br/criaac/tiki-download_file.php?fileId=442&display

¹² <http://www.confagri.pt/Noticias/Pages/noticia65073.aspx>

3.1 Agriculture

Portugal's Utilised Agricultural Area (UAA) is about 3.6 million hectares, of which 30% is occupied by temporary crops, 20% by permanent crops and 50% by permanent grassland. The number of farm holdings is around 300,000. Only 15% of the UAA is suitable for irrigation (2013 data), corresponding to 58.5% of total farm holdings. Regarding farm structure, there is a predominance of small farms: about 72% have less than 5 hectares of UAA. On the other hand, 67% of the UAA is concentrated in 4% of the farms, which are larger than 50 hectares. As to the structure of agricultural production, 54.3% of its value is related to crop production, especially fruit and vegetables (60% of crop production), and 41.2% to animal production, of which milk production accounts for 25%.¹³

Figure 3.2: Agriculture and livestock production areas¹⁴



13 http://www.gpp.pt/images/GPP/O_que_disponibilizamos/Publicacoes/Periodicos/Indicadores_2016.pdf

14 http://www.gpp.pt/images/GPP/O_que_disponibilizamos/Publicacoes/Periodicos/Indicadores_2016.pdf

3.1.1 Crop production

The main annual and perennial crops cultivated in Portugal are shown in the tables below.

Table 3.1: Main agricultural productions in Portugal, per Region – annual crops (from¹⁵)

	Durum wheat		Common wheat		Corn		Irrigated corn	
	Surf (ha)	Prod (t)	Surf (ha)	Prod (t)	Surf (ha)	Prod (t)	Surf (ha)	Prod (t)
Norte	4 211	4 214	4 211	4 214	29 987	104 387	25 213	98 169
Centro	3 374	5 922	3 259	5 637	32 917	255 242	28 582	243 365
Lisboa e Vale do Tejo	653	1 459	625	1 400	2 282	29 832	2 282	29 832
Alentejo	30 807	67 841	28 314	62 410	32 234	435 305	32 234	435 305
Algarve	657	887	571	758	202	2 174	188	2 145
	Rye		Rice		Oat		Barley	
	Surf (ha)	Prod (t)	Surf (ha)	Prod (t)	Surf (ha)	Prod (t)	Surf (ha)	Prod (t)
Norte	11 663	11 202	0	0	3 405	1 832	265	153
Centro	6 244	4 099	6 342	33 480	4 298	3 023	916	1 906
Lisboa e Vale do Tejo	0	0	4 928	32 159	80	102	219	527
Alentejo	178	181	17 667	118 599	32 169	43 515	19 477	41 477
Algarve	14	12	204	679	463	499	294	338
	Beans		Chickpea		Potato		Irrigated potato	
	Surf (ha)	Prod (t)	Surf (ha)	Prod (t)	Surf (ha)	Prod (t)	Surf (ha)	Prod (t)
Norte	1 439	755	85	61	9 205	128 441	7 489	115 030
Centro	1 547	830	323	200	8 565	152 704	6 627	136 494
Lisboa e Vale do Tejo	6	5	41	23	2 239	80 923	2 162	80 052
Alentejo	144	126	1 173	1 103	2 452	69 223	2 450	69 199
Algarve	15	9	8	5	324	6 552	295	6 222
	Tomato		Sunflower		Fodder corn		Fodder oat	
	Surf (ha)	Prod (t)	Surf (ha)	Prod (t)	Surf (ha)	Prod (t)	Surf (ha)	Prod (t)
Norte	0	0	0	0	40 620	1 841 534	15 206	239 294
Centro	189	12 051	327	704	23 306	664 473	25 847	256 045
Lisboa e Vale do Tejo	3 240	308 545	524	1 465	1 255	74 309	1 165	19 976
Alentejo	15 931	1 511 871	19 078	22 575	4 287	234 008	70 449	1 187 222
Algarve	0	0	0	0	75	3 091	1 768	31 066

¹⁵ Estatísticas Agrícolas 2015, https://www.ine.pt/xportal/xmain?xpid=INE&xpgid=ine_publicacoes&PUBLICACOESpub_boui=271434407&PUBLICACOESmodo=2

Table 3.2: Main agricultural productions in Portugal, per Region – perennial crops (from¹⁶)

	Apple		Pear		Peach		Cherry		
	Surf (ha)	Prod (t)	Surf (ha)	Prod (t)	Surf (ha)	Prod (t)	Surf (ha)	Prod (t)	
Norte	5 987	144 374	512	5 473	479	2 188	3 446	9 046	
Centro	7 335	169 019	10 960	128 310	2 279	28 712	2 690	8 134	
Lisboa e Vale do Tejo	173	3 243	87	1 074	94	771	8	15	
Alentejo	338	6 313	501	5 687	706	12 569	68	258	
Algarve	23	194	32	293	187	2 629	8	13	
	Plum		Kiwi		Orange		Tangerine		
	Surf (ha)	Prod (t)	Surf (ha)	Prod (t)	Surf (ha)	Prod (t)	Surf (ha)	Prod (t)	
Norte	260	1 211	1 721	23 205	784	5 481	75	454	
Centro	700	12 506	564	4 887	931	7 916	65	526	
Lisboa e Vale do Tejo	75	1 177	2	23	294	2 630	28	266	
Alentejo	610	8 110	4	30	2 114	18 974	222	3 088	
Algarve	98	1 230	4	29	12 213	207 608	1 928	32 831	
	Almond		Chestnut		Nut		Table olives		
	Surf (ha)	Prod (t)	Surf (ha)	Prod (t)	Surf (ha)	Prod (t)	Surf (ha)	Prod (t)	
Norte	19 856	7 569	31 346	22 844	1 476	1 321	3 744	10 523	
Centro	1 168	671	3 549	2 405	758	878	1 534	946	
Lisboa e Vale do Tejo	5	4	5	6	22	35	26	15	
Alentejo	1 724	1 062	520	2 067	903	1 536	3 254	9 094	
Algarve	7 398	783	16	15	116	277	236	173	
	Oil olives		Oil		Table grape		Wine grape		Wine
	Surf (ha)	Prod (t)	Prod (t)	Surf (ha)	Prod (t)	Surf (ha)	Prod (t)	Prod (t)	
Norte	77 592	92 899	146 986	137	501	82 855	329 970	2 474 771	
Centro	79 623	100 204	151 735	621	4 355	50 754	277 000	2 077 501	
Lisboa e Vale do Tejo	596	510	299	130	737	8 181	66 859	501 445	
Alentejo	176 133	502 715	884 612	787	9 027	31 977	233 238	1 749 284	
Algarve	8 603	5 813	6 892	390	4 325	1 208	1 817	13 630	

¹⁶ Estatísticas Agrícolas 2015, https://www.ine.pt/xportal/xmain?xpid=INE&xpgid=ine_publicacoes&PUBLICACOESpub_boui=271434407&PUBLICACOESmodo=2

Overall, agricultural residues are distributed as follows (2007 data)¹⁷:

Table 3.3: Agricultural residues per region

Region	Agricultural residues (ton/ year)
Norte	284 000
Centro	260 000
Lisboa e Vale do Tejo	213 000
Alentejo	400 000
Algarve	15 000

Agricultural residues are being considered for valorisation in a number of research projects in Portugal. See a list of projects in Chapter 6.

The main agroindustrial companies are shown in the table below.

Table 3.4: Main players (from AEP's Top 50 Companies in the sector "Agriculture and forestry", category "agriculture")

Company	Town	Region	Turnover (Euro)	Employees	Sector
DE PRADO PORTUGAL, S.A.	Beja	Alentejo	37 159 347	113	Combined agriculture and livestock production
LUSOMORANGO - ORGANIZAÇÃO DE PRODUTORES DE PEQUENOS FRUTOS, S.A.	Odemira	Alentejo	29 673 137	8	Service activities related to agriculture
AGRO PECUÁRIA VALINHO, S.A.	Santarém	Lisboa e Vale do Tejo	27 814 420	116	Combined agriculture and livestock production
IBERIAN SALADS - AGRICULTURA, S.A.	Odemira	Alentejo	22 136 911	263	Crops of vegetables, roots and tubers
COMPANHIA GERAL DA AGRICULTURA DAS VINHAS DO ALTO DOURO S.A.	Vila Nova de Gaia	Norte	20 257 651	250	Viticulture
VARANDAS DE SOUSA, S.A.	Vila Flor	Norte	19 930 587	284	Crops of vegetables, roots and tubers
HORTAFINA - PRODUÇÃO HORTICOLA, LDA.	Torres Vedras	Lisboa e Vale do Tejo	18 570 168	31	Crops of vegetables, roots and tubers
HERDADE DA COMPORTA - ACTIVIDADES AGRO SILVÍCOLAS E TURÍSTICAS, S.A.	Alcácer do Sal	Alentejo	18 283 309	28	Rice culture
SOCIEDADE AGRICOLA DE NOGUEIRA, LDA.	Vila Nova de Gaia	Norte	16 883 668	29	Viticulture
VALINVESTE - INVESTIMENTOS E GESTÃO AGRICOLA, LDA	Santarém	Lisboa e Vale do Tejo	13 746 692	9	Cereals (except rice)

¹⁷ <http://www.imflorestal.com/wp-content/uploads/2016/01/1.5.-Estudo-do-potencial-energe%CC%81tico-de-calor-de-cada-biomassa.pdf>

HORTOMELÃO - PRODUTOS HORTÍCOLAS E FRUTOS, S.A.	Santarém	Lisboa e Vale do Tejo	12 999 538	70	Crops of vegetables, roots and tubers
FUNDAÇÃO EUGÉNIO DE ALMEIDA	Évora	Alentejo	12 163 395	325	Viticulture
AGRIPRIMCO, UNIPESSOAL LDA	Benavente	Lisboa e Vale do Tejo	11 738 383	17	Crops of vegetables, roots and tubers
ESPECIAL FRUTAS - COMÉRCIO DE FRUTAS E PRODUTOS HORTÍCOLAS, LDA.	Alcobaça	Centro	9 392 876	28	Culture of other fruits in trees and shrubs
INTERSUÍNOS - SUÍNOS DE PORTUGAL, S.A.	Alenquer	Lisboa e Vale do Tejo	9 253 352	18	Combined agriculture and livestock production
PORVAL - AGROPECUÁRIA, S.A	Leiria	Centro	9 033 545	41	Combined agriculture and livestock production
CEREALPLUS - ORGANIZAÇÃO DE PRODUTORES DE CEREAIS, S.A.	Lisboa	Lisboa e Vale do Tejo	9 011 528		Cereals (except rice)
GLOBALMILHO - ORGANIZAÇÃO DE PRODUTORES DE CEREAIS LDA	Santarém	Lisboa e Vale do Tejo	8 918 996	3	Cereals (except rice)
MARAVILHA FARMS - PRODUÇÃO E COMERCIALIZAÇÃO DE FRUTOS, S.A.	Odemira	Alentejo	8 762 243	262	Culture of other fruits in trees and shrubs

3.1.1.1 Annual crops

The bulk of annual crops are produced in Alentejo, with the exception of potatoes (Norte and Centro).

Table 3.5: Agricultural residues per species, annual crops (2002 data)¹⁸

Crop	Dry residues (thousand ton / year)
Durum wheat straw	46
Common wheat straw	189
Barley straw	24
Oat straw	47
Rye straw	37
Rice straw	112
Corn stalk	791
Sunflower stalk	38
Sugarbeet	12
Tomato	28

Appendix B includes a list of producers of annual crops from the database of IFAP.

¹⁸ <http://www.imflorestal.com/wp-content/uploads/2016/01/2.1.-Estudo-de-quantificac%CC%A7a%CC%83o-dos-resi%CC%81duos-agri%CC%81colas.pdf>

3.1.1.2 Fruit

Orange and other citrus are mostly produced in Algarve, while apple, pear and nut fruits are mostly produced in Norte. The remainder of production is scattered across the country.

Appendix B includes a list of producers of fruit from the database of IFAP.

3.1.1.3 Olives and olive oil

Last available data on olive oil production are from 2015, with a total produced volume over 106,000 t (best result since the 1960s). 76% of all olive oil is produced in Alentejo, where 170,000 hectares of land are dedicated to olive trees plantations.

Table 3.6: Olive residues per region (2012 data)¹⁹

Region	Olive oil districts	Dry residues (ton /year)
Norte	Entre Douro e Minho	528
	Tras-os-Montes	45 159
Centro	Beira Litoral	8 604
	Beira Interior	28 401
	Ribatejo e Oeste	15 324
Alentejo	Alentejo	98 446
Algarve	Algarve	5 039

Effluents and residues from olive oil production are disposed at a cost and pose environmental issues.

A project from Universidade de Tras-os-Montes e Alto Douro (UTAD), in the North, together with the local olive oil cooperative, developed a pilot plant for valorisation of olive oil and cork industry residues into solid biomass fuels. The project is described in Chapter 6.

“Casa do Azeite” is the association of olive oil producers, grouping 95% of olive oil bottled in Portugal.

Casa do Azeite - Associação do Azeite de Portugal,

Rua Pinheiro Chagas, n.º 17, 4º Esq.,

1050-174 Lisboa Portugal

<http://www.casadoazeite.pt>

¹⁹ <http://www.imflorestal.com/wp-content/uploads/2016/01/2.1.-Estudo-de-quantificac%CC%A7a%CC%83o-dos-resi%CC%81duos-agri%CC%81colas.pdf>

Table 3.7: Members of “Casa do Azeite”

Company	Town	Region
Agri-Mendes, Agricultura e Comércio, Lda.	S. Vicente Do Paul	Lisboa e Vale do Tejo
Azeol - Soc. de Azeites e Óleos da Estremadura, S.A.	Torres Vedras	Lisboa e Vale do Tejo
Carm - Casa Agrícola Roboredo Madeira, S.A.	Almendra	Centro
Cartoil - Sociedade Agrícola e Oleaginosas, S.A.	Ferreira Do Alentejo	Alentejo
Cidacel - Comércio e Indústria de Azeites Central Lousanense, S.A.	Lousã	Centro
Cooperativa Agrícola de Beja e Brinches, C.R.L.	Beja	Alentejo
Cooperativa Agrícola de Moura e Barrancos, C.R.L.	Moura	Alentejo
Cooperativa Agrícola de Portel, C.R.L.	Portel	Centro
Cooperativa de Olivicultores de Borba, C.R.L.	Borba	Alentejo
Cooperativa de Olivicultores de Valpaços, C.R.L.	Valpaços	Norte
De Prado Portugal, S.A.	Beja	Alentejo
Esporão Vendas e Marketing, S.A.	Lisboa	Lisboa e Vale do Tejo
Est. Manuel da Silva Torrado & C ^a . (Irmãos), S.A.	Lisboa	Lisboa e Vale do Tejo
Fernandes & Henriques, Lda.	Oliveira Do Mondego	Centro
Fernando Seco, Sucessores, Lda.	Torres Vedras	Lisboa e Vale do Tejo
Fio Dourado - Transformação e Comercialização de Produtos Olivícolas, Lda.	Pernes	Lisboa e Vale do Tejo
Fundação Eugénio de Almeida	Évora	Alentejo
GALLO Worldwide, Lda. / Victor Guedes - Ind. e Com. S.A.	Lisboa	Lisboa e Vale do Tejo
Ingrediente Primavera, Unipessoal, Lda.	Baleizão	Alentejo
J. Portugal Ramos Vinhos, S.A.	Estremoz	Alentejo
Leopoldino Freitas & Filhos, Lda.	Formigais	Lisboa e Vale do Tejo
Maçarico, S.A. - Fábrica de Conservas Alimentares	Praia De Mira	Centro
Manuel Serra, S.A.	Vila Do Conde	Norte
Mathias II - Export, Unipessoal Lda.	Nelas	Centro
Moenga - Produção, Embalagem e Comercialização de Azeite, Lda.	Ponte De Sôr	Alentejo
Olidal - Olivicultores do Alentejo, C.R.L.	Santo Amaro	Açores
Olivais do Sul, S.A.	Monte Do Trigo	Alentejo
Ourogal – Sociedade de Transformação e Comercialização de Produtos Agrícolas, S.A.	Abrantes	Alentejo
Pecoliva - Sociedade Industrial e Pecuária do Algarve, Lda.	São Brás De Alportel	Algarve
Polistock - Sociedade Agro-Pecuária, Turística e Imobiliária, S.A.	Gavião	Alentejo
Quinta do Crasto	Sabrosa	Norte
Ramiro Augusto do Vale II - Distribuição, S.A.	Viseu	Centro

Riazor - Azeites e Óleos Vegetais, S.A.	Riachos	Lisboa e Vale do Tejo
Sequeira Pedroso, Azeite de Portugal, Lda.	Vila De Prado	Norte
Sica - Soc. Industrial e Comercial de Azeites, Lda.	Estremoz	Alentejo
Sociedade Agrícola Colinas de São Lourenço, Lda.	São Lourenço Do Bairro	Centro
Sociedade Agrícola da Herdade de Alcobaça, S.A.	Elvas	Centro
Sociedade Agrícola de Pias	Pias Srp	Alentejo
Sociedade Agrícola do Vale de Umbria, S.A.	Beja	Alentejo
Sociedade de Exploração e Gestão Agrícola, S.A.	Beja	Alentejo
Sovena Portugal - Consumer Goods, S.A.	Algés	Lisboa e Vale do Tejo
Vineves, S.A.	Fátima	Lisboa e Vale do Tejo
Viveiros Monterosa, Lda.	Moncarapacho	Algarve

Table 3.8: Main players (from AEP's Top 50 Companies in the sector "Food")

Company	Town	Region	Turnover (Euro)	Employees	Sector
SOVENA PORTUGAL - CONSUMER GOODS, S.A.	Oeiras	Lisboa e Vale do Tejo	301 124 777	231	Refining of olive oil, oils and fats
VICTOR GUEDES - INDUSTRIA E COMÉRCIO, S.A.	Lisboa	Lisboa e Vale do Tejo	117 451 385	101	Production of olive oil

Appendix B reports a list of olive plantations from the database of IFAP.

3.1.1.4 Vineyards

Viticulture historically plays an important role in Portugal's agricultural sector. Latest available data from GGP (2004) show vineyards contribution at 14% of the overall agricultural value (including livestock)²⁰.

The surface occupied by vineyards is 220,000 hectares²¹, with over 65% of vineyards having a quality or local denomination classification.

Table 3.9: Wine producing regions in Portugal

Region	Wine producing district	Area (ha)	
		DOP *	Total
Norte	Minho	15 810	27 432
	Trás-os-Montes	417	23 303
	Douro	40 378	43 611
Centro	Beiras	8 370	52 670
Lisboa e Vale do Tejo	Lisboa	1 074	22 425
	Península de Setúbal	2 154	8 622
	Tejo	1 161	15 653
Alentejo	Alentejo	10 090	23 188
Algarve	Algarve	119	1 733
Total		79 573	218 677

Table 3.10: Vineyard residues per region (2012 data)²²

Region	Wine producing district	Wet residues (ton / year)
Norte	Minho	52 500
	Tras-os-montes	17 500
	Douro/Porto	80 500
Centro	Terras de Cister	3 675
	Beira Atlantico	17 500
	Terras do Dao	35 000
	Terras da Beira	28 000
Lisboa e Vale do Tejo	Lisboa	52 500
	Tejo	33 250
	Peninsula de Setubal	17 500
Alentejo	Alentejo	41 125
Algarve	Algarve	3 500

20 http://www.gpp.pt/images/GPP/O_que_disponibilizamos/Publicacoes/Vinho_Diagnostico_Sectorial.pdf

21 <http://www.ivv.min-agricultura.pt/np4/125/>

22 <http://www.imflorestal.com/wp-content/uploads/2016/01/2.1.-Estudo-de-quantificac%C3%A7%C3%A3o-dos-resi%C3%81duos-agri%C3%81colas.pdf>

ACIBEV is the association grouping wine producers, representing roughly 80% of the sector turnover.

- ACIBEV - Associação de Vinhos e Espirituosas de Portugal, Largo do Carmo, 15-1º, 1200-092 Lisboa.

Each wine producing region has its own consortium or association, among whom are notable:

- AEVP – Associação das Empresas de Vinho do Porto (Porto), the consortium of Port wine producers (15 companies representing 90% of Port and 35% of DOC Douro production);
- ADVID - Cluster dos Vinhos da Região Demarcada do Douro (Porto), representing most Douro wines;
- FEVIPOR - Federação de Viticultores de Portugal (Evora), the vineyard federation of Portugal;
- FENAVI - Federação Nacional de Viticultores Independentes (Porto), grouping independent vineyards.

Appendix B includes a list of vineyards from the database of IFAP.

3.1.2. Livestock

In 2015, the value of Portuguese livestock production was 2809.3 M€, corresponding to 39.7% of the overall value of agricultural production. From 2010 to 2015, the annual average growth rate was 1.9%. The main product is milk (25.2%), followed by cattle (20.2%), swine (19.6%), poultry (18.4%), eggs (6.0%) and sheep and goats (5.1%)²³.

The main livestock farmers are shown in the table below.

Table 3.11: Main players (from AEP's Top 50 Companies in the sector "Agriculture and forestry", category "livestock")

Company	Town	Region	Turnover (Euro)	Employees	Sector
EUROESTE, S.A.	Rio Maior	Lisboa e Vale do Tejo	50 392 864	90	Swine Industry - Meat
NORTE AVES - PRODUÇÃO AVÍCOLA, S.A	Viseu	Centro	48 791 464	86	Poultry farming
SOCIEDADE AGRÍCOLA DA QUINTA DA FREIRIA, S.A	Torres Vedras	Lisboa e Vale do Tejo	46 320 161	202	Poultry farming
DE PRADO PORTUGAL, S.A.	Beja	Alentejo	37 159 347	113	Combined agriculture and livestock production
ZÊZEROVO - PRODUÇÃO AGRÍCOLA E AVÍCOLA DO ZÊZERE, S.A	Ferreira do Zêzere	Lisboa e Vale do Tejo	34 184 300	152	Poultry farming
OVO D'OURO - PRODUÇÃO E COMÉRCIO DE OVOS, LDA	Lourinhã	Lisboa e Vale do Tejo	31 690 676	271	Poultry farming
PRO-GALO - PRODUÇÃO E COMERCIALIZAÇÃO AVÍCOLA, LDA	Torres Vedras	Lisboa e Vale do Tejo	31 014 291	7	Poultry farming
TERRA A TERRA, PRODUTOS AGRÍCOLAS, LDA	Aveiro	Centro	29 329 146	50	Breeding of cattle for milk production
HIPERFRANGO - PRODUÇÃO AVÍCOLA, LDA	Leiria	Centro	29 180 269	8	Poultry farming

²³ http://www.gpp.pt/images/GPP/O_que_disponibilizamos/Publicacoes/Periodicos/Produtos_Animais_2.pdf

AGRO PECUÁRIA VALINHO, S.A.	Santarém	Lisboa e Vale do Tejo	27 814 420	116	Combined agriculture and livestock production
RAÇALTO - EMPREENDIMENTOS AGRÍCOLAS, INDUSTRIAIS E PECUÁRIOS, S.A	Benavente	Lisboa e Vale do Tejo	20 032 224	17	Swine Industry - Meat
INTERGADOS - COMERCIALIZAÇÃO, INTEGRAÇÃO E PRODUÇÃO DE ANIMAIS, S.A.	Rio Maior	Lisboa e Vale do Tejo	18 670 737	105	Swine Industry - Meat
CRIGADO - SOCIEDADE AGRO-PECUÁRIA, S.A	Alcobaça	Centro	18 191 619	51	Swine Industry - Meat
VICENTE HENRIQUES & FILHOS, LDA.	Torres Vedras	Lisboa e Vale do Tejo	18 009 485	16	Poultry farming
AVIÁRIO DO RESOURO - PRODUÇÃO DE OVOS, LDA.	Ourém	Lisboa e Vale do Tejo	14 064 535	44	Poultry farming
MARINHAVE - SOCIEDADE AGRO-AVICOLA, S.A.	Benavente	Lisboa e Vale do Tejo	13 980 309	123	Poultry farming
AVICLASSE - SOCIEDADE AVÍCOLA, S.A	São Pedro do Sul	Centro	13 827 705	63	Poultry farming
SUIGRANJA - SOCIEDADE AGRICOLA, S.A	Sintra	Lisboa e Vale do Tejo	13 818 894	86	Swine Industry - Meat
OVOPOR - AGRO PECUÁRIA DOS MILAGRES, S.A	Leiria	Centro	12 146 631	55	Poultry farming
SERRA & SILVA, LDA.	Oliveira de Frades	Centro	11 918 074	54	Poultry farming
MANUEL QUERIDO - PRODUÇÃO E COMÉRCIO DE SUINOS, LDA	Caldas da Rainha	Centro	11 540 585	64	Swine Industry - Meat
SUIPEC - AGRO PECUÁRIA, LDA.	Alcobaça	Centro	11 240 590	42	Swine Industry - Meat
PINTO BAR-EXPLORAÇÃO AVICOLA LDA	Amares	Norte	11 043 751	79	Poultry farming
CARNES MIRANDA, LDA	Ponte de Sor	Alentejo	9 795 288	12	Sheep and goat farming
EXTRINVEST - AGRO PECUÁRIA, S.A.	Montemor-o-Novo	Alentejo	9 744 134	21	Swine Industry - Meat
NUNES & FREITAS, LDA.	Câmara de Lobos	Açores	9 722 484	56	Poultry farming
INTERSUÍNOS - SUÍNOS DE PORTUGAL, S.A.	Alenquer	Lisboa e Vale do Tejo	9 253 352	18	Combined agriculture and livestock production
PORVAL - AGROPECUÁRIA, S.A	Leiria	Centro	9 033 545	41	Combined agriculture and livestock production

GEMADOURO - PRODUTORES DE OVOS S.A.	Pombal	Centro	8 696 177	3	Poultry farming
MULTILAFÕES - AVIÁRIO DE MULTIPLICAÇÃO DE LAFÕES, S.A.	Oliveira de Frades	Centro	8 354 368	66	Poultry farming
SMUR - SOCIEDADE DE MULTIPLICAÇÃO E RECRIA ANIMAL, S.A.	Alcochete	Lisboa e Vale do Tejo	8 198 456	32	Swine Industry - Meat

3.1.2.1 Cattle

Appendix B includes a list of cattle farms from the database of IFAP.

3.1.2.2 Ovine and caprine

Appendix B includes a list of ovine and caprine farms from the database of IFAP.

3.1.2.3 Swine

Appendix B includes a list of ovine and caprine farms from the database of IFAP.

3.1.2.4 Poultry

Appendix B includes a list of poultry farms from the database of IFAP.

3.1.2.5 Dairy products

Appendix B includes a list of dairy farms from the database of IFAP.

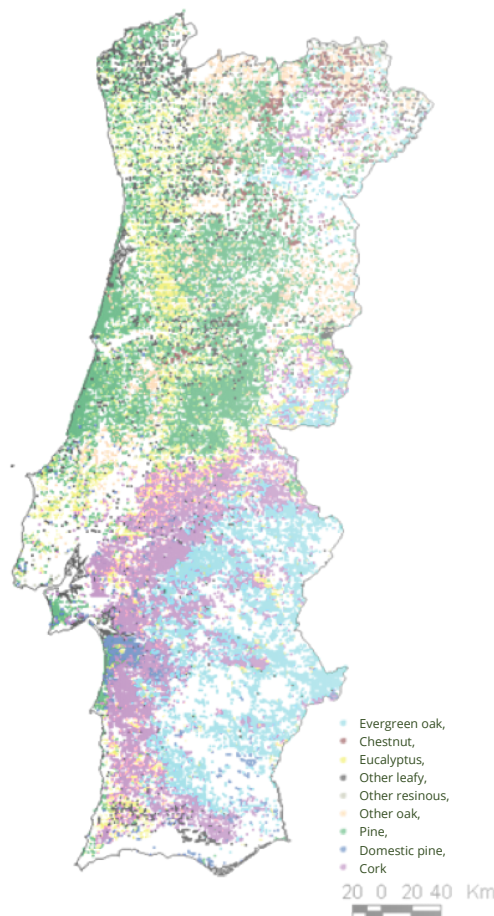
3.2 Forest

Over one third of the country's territory consists of exploited or exploitable forests. Forestry and the related value chains (pulp&paper, wood and cork) are thus one of the key segments of the primary sectors. Current forest area totals 3.26 million hectares, with a great diversity of species, predominantly native species. The three most relevant tree species are eucalyptus, pine and cork trees; oak, in particular evergreen oaks, and chestnut are also present but have an overall lower economic impact. Their geographical distribution is shown in the figure below, with a clear predominance of eucalyptus and pine in the Norte and Centro regions, shifting to cork and evergreen oak (the latter important as feed in the local swine industry of Alentejo) while moving South.

In 2014, the value of forest production was 1,193 million euros, with hardwood for grinding accounting for 25.5% and cork for 18.5%¹⁴.

²⁴Olive trees, while playing a relevant role in Portugal's rural economy and landscape, are not accounted for under forestry but rather under agriculture. The same applies to fruit trees.

Figure 3.3: Forestry in Portugal²⁵



²⁴ http://www.gpp.pt/images/GPP/O_que_disponibilizamos/Publicacoes/Periodicos/Indicadores_2016.pdf

²⁵ Data from ICNF, elaborated by Geopalavras <http://www.geopalavras.pt/2013/11/historia-do-eucalipto-em-portugal.html>

Table 3.12: Main forest productions in Portugal, per region (thousand hectares)²⁶

Region	Pine	Domestic pine	Cork	Eucalyptus	Evergreen oak
Norte	152.2			139.4	
Centro	404.7			375.5	
Alentejo		114.2	622.3	194.9	299.1

Table 3.13: Forest residues per species²⁷

	Green residues (ton / year)	Dry residues (ton / year)
Pine	608 000	260 500
Eucalyptus	843 500	403 500
Evergreen oak	62 500	26 500
Cork	195 000	83 000

Several associations of forestry industries exist:

- ANEFA - Associação Nacional de Empresas Florestais, Agrícolas e do Ambiente
Rua dos Arneiros, 72 A - Lisboa
- APCOR - Associação Portuguesa da Cortiça
Avenida Comendador Henrique Amorim, 580 - Santa Maria de Lamas
- FORESTIS - Associação Florestal de Portugal
Rua de Santa Catarina, 753 - Porto
- AIFF - Associação para a competitividade das Indústrias da Fileira Florestal
Avenida Comendador Henrique Amorim, 580 - Santa Maria de Lamas

The main industrial players in the forestry sector are reported in the table below.

Table 3.14: Main players (from AEP's Top 50 Companies in the sector "Agriculture and forestry", category "forest")

Company	Town	Region	Turnover (Euro)	Employees	Sector (eng)
PORTUCELSORCEL FLORESTAL - SOC. DESENVOLVIMENTO AGRO-FLORESTAL, S.A. ²⁸	Setúbal	Lisboa e Vale do Tejo	49 073 100	75	Service activities related to forestry and logging
ALTRI FLORESTAL, S.A.	Figueira da Foz	Centro	38 250 979	16	Service activities related to forestry and logging
FLOPONOR - FLORESTAS E OBRAS PÚBLICAS DO NORTE, S.A.	Trancoso	Centro	25 055 495	136	Forest exploration
ARBOSER - SERVIÇOS AGRO-INDUSTRIAIS, S.A.	Setúbal	Lisboa e Vale do Tejo	10 840 291	47	Service activities related to forestry and logging

²⁶ Estatísticas Agrícolas 2015, https://www.ine.pt/xportal/xmain?xpid=INE&xpgid=ine_publicacoes&PUBLICACOESpub_boui=271434407&PUBLICACOESmodo=2

²⁷ <http://www.imflorestal.com/wp-content/uploads/2016/01/5.1.-Estudo-do-poder-calori%CC%81fico-de-biomassa-agri%CC%81cola-e-florestal-carbonizado-pelo-processo-de-piro%CC%81lise.pdf>

²⁸ Now the Navigator Company, with head office in Aveiro (Centro)

3.3 Blue Economy

A 2014 study²⁹ published on behalf of DG Maritime Affairs and Fisheries looks into Portugal's Blue Growth potential.

In November 2017 the first Union for the Mediterranean (UfM) Regional Stakeholder Conference on Blue Economy³⁰ was devoted to job creation and investment potential of blue economy in the Mediterranean basin.

3.3.1 Fisheries

The coastline of Portugal measures approximately 2587 km, including the continental territory (1242 km) and the archipelagos of Açores (943 km) and Madeira (402 km). In 2015, fish catches by the Portuguese fleet totalled 194,164 tons. 140,831 tonnes of fresh or chilled fish were traded at auction, realising 260.9 M€.

Table 3.15: Main players (from AEP's Top 50 Companies in the sector "Aquaculture and fishery")

Company	Town	Region	Turnover (Euro)	Employees	Sector
SOCIEDADE DE PESCA MIRADOURO, S.A.	Ilhavo	Centro	25 872 237	140	Sea fishing
DOCAPESCA - PORTOS E LOTAS, S.A.	Lisboa	Lisboa e Vale do Tejo	22 210 690	455	Sea fishing
ANTÓNIO CONDE & CIA., S.A.	Ilhavo	Centro	17 135 502	124	Sea fishing
SULMARÉ - EMPRESA DE PESCA, LDA.	Alenquer	Lisboa e Vale do Tejo	16 506 146	79	Sea fishing
PEDRO FRANÇA, S.A.	Ilhavo	Centro	10 080 798	74	Sea fishing
EMPRESA DE PESCA DE AVEIRO, S.A.	Ilhavo	Centro	9 993 070	106	Sea fishing
LOTAÇOR - SERVIÇO DE LOTAS DOS AÇORES, S.A.	Ponta Delgada	Açores	6 291 936	163	Sea fishing
TESTA & CUNHAS, S.A.	Ilhavo	Centro	6 214 537	98	Sea fishing
EMPRESA FIGUEIRENSE DE PESCA, LDA.	Figueira da Foz	Centro	4 754 171	30	Sea fishing
EMPRESA DE PESCA S. JACINTO, S.A.	Coimbra	Centro	3 812 802	50	Sea fishing
TUNIPEX - EMPRESA DE PESCA DE TUNIDEOS, S.A.	Olhão	Algarve	3 429 154	48	Sea fishing
SOCIEDADE PESCA FOZ DA NAZARÉ, LDA	Matosinhos	Norte	3 290 503	15	Sea fishing
ESTEIRO PESCA, LIMITADA	Matosinhos	Norte	3 158 152		Sea fishing
SOCIEDADE DE PESCA SILVA VIEIRA, LDA.	Ilhavo	Centro	3 086 623	45	Sea fishing
AQUALVOR - ACTIVIDADES EM AQUACULTURA, LDA.	Lagos	Algarve	2 818 534	12	Aquaculture in salt and brackish waters

29 https://webgate.ec.europa.eu/maritimeforum/system/files/Annex%20VII_PT_country%20paper_final_7Mar14.pdf

30 <https://webgate.ec.europa.eu/maritimeforum/en/node/4125>

SEBASTIÃO & FILHOS, LDA.	Lourinhã	Lisboa e Vale do Tejo	2 805 436	15	Sea fishing
ARRASTÕES REUNIDOS, LDA.	Ilhavo	Centro	2 596 349	33	Sea fishing
PESCARADE - SOCIEDADE DE PESCA DO ARADE, LDA	Lagoa (Algarve)	Algarve	2 556 095	7	Sea fishing
LUDIMAR - INDUSTRIA DE PESCAS, LDA.	Sines	Alentejo	2 307 020	21	Sea fishing
JOSE JACINTO FARIAS & JACINTO DA BICA FARIA, LDA.	Sines	Alentejo	2 271 460	28	Sea fishing

More companies are shown in Appendix B.

3.3.2 Aquaculture

Even though Portugal is the third country in the world by consumption of fish per capita (after Iceland and Japan)³¹, aquaculture is still a relatively new and small sector when compared to fishery.

Aquaculture production reached 11 259 tonnes in 2016 and generated a revenue of 75.2 million euros³². Production in brackish and marine waters remained the most important, accounting for about 94% of total production. The production of fish in brackish and marine waters represented 37.6% of the total production, of which 84.7% corresponded to the production of seabream and turbot. At the end of 2016, there were 1 518 establishments licensed for aquaculture in fresh, salt and brackish waters

Sea conditions of most of the Portuguese coast are not favourable for aquaculture due to the lack of bays or islands shielding installations from the ocean.

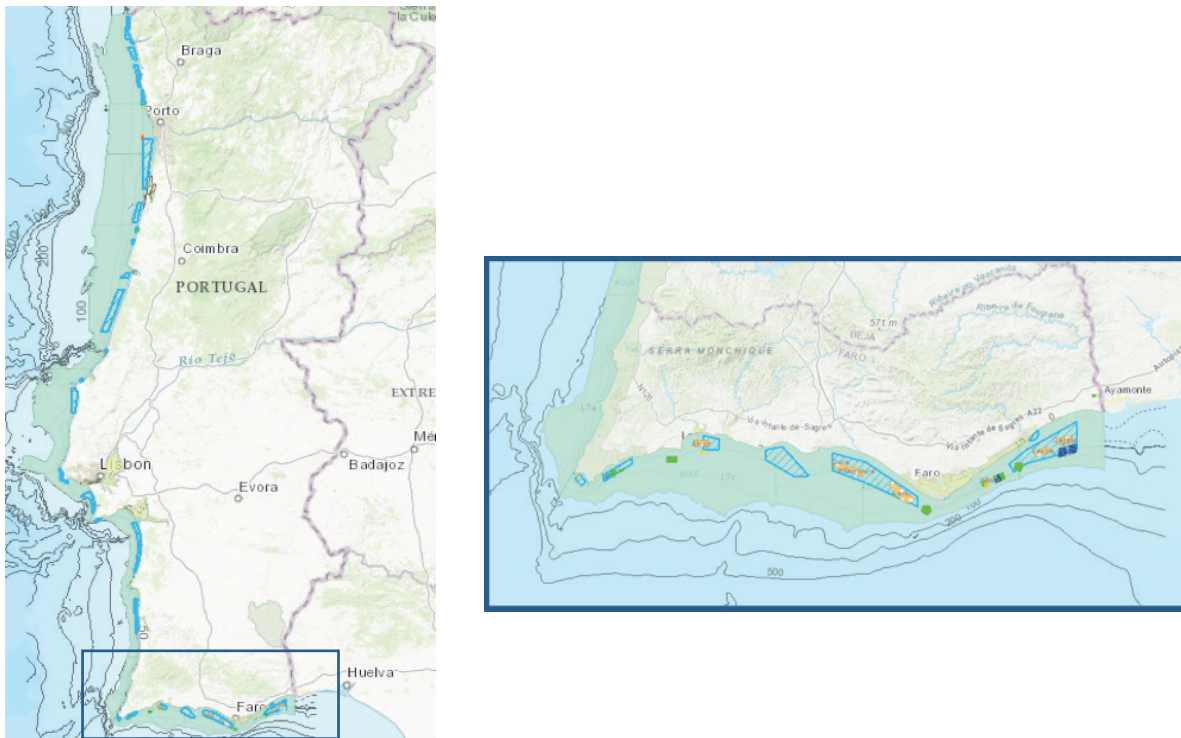
As a result, aquaculture is largely confined to the estuaries and lagoons along the coast, and to the Southern coast of Algarve where milder conditions occur.

Several zones are allocated for potential offshore aquaculture development along the coast, but Algarve is the only region where large scale floating structures are actually developed. Aquazor, a new offshore aquaculture project aims to interconnect various industries and test the production of fish and bivalves in the Azores.

³¹ <http://www.clusterdomar.com/index.php/temas/case-study/117-aquacultura>

³² <https://rea.apambiente.pt/content/aquaculture-production?language=en>

Figure 3.4: Areas allocated for aquaculture development (left, in blue); actual aquaculture establishments in Algarve (right, in green)³³



3.3.3 Algae

AlgaPlus (Alga+) is the leading producer of macroalgae in Portugal, mostly for food use. The production method is partially based on a symbiosis with fish farms in inner waters, in which the algae are fed effluents from the fish tanks. AlgaPlus will expand its production via the recent deal made with OLMIX, specialist in natural algae-based solutions.

Iberagar is Portugal's leading company in the production of agar, a food and pharmaceutical ingredient derived from algae. Iberagar does not cultivate its algae, but rather gathers wild algae from the sea.

The interest in microalgae is growing in Portugal. Established players include **Sparos**, **Necton**, **AllMicroalgae** and **Buggypower**.

A large research centre and pilot site named ALGATEC – Eco Business Park is currently in development near Lisbon. The centre is managed by **A4F** (Algae for future) in cooperation with Solvay. A4F is one of the largest established microalgae players in Portugal, with several operations running. AlgaFarm³⁴, the prototype commercial microalgae production unit located in Pataias, is composed of more than 1.300 m³ of tubular photobioreactors.

Seaweed Energy Solutions (CASULO Lda in Portugal) is a large producer of seaweed in open waters, and partly operates in Portugal as well as Norway.

Futuralgae is a recent startup also aiming to work in microalgae. Other companies like **BIOTREND**, **SEA4US**, **Biomimetix**, **MARINNOVA**, **Materospace**, etc., are part of a new generation of blue bioresources companies. Biotrend.

³³ From <http://eaquicultura.pt/navegue-pelo-mapa-da-aquicultura-em-portugal/>

³⁴ <http://www.a4f.pt/en/projetos/algafarm>

04

**Current and
potential users
of biomass**

4. Current and potential users of biomass

4.1 Food industry

Food industry is the largest sector among processing industry in terms of GDP and the second in terms of employment³⁵. The paragraphs below show the main players in each of the main subsectors according to AEP's database.

4.1.1 Meat

Table 4.1: Main players (from AEP's Top 50 Companies in the sector "Food")

Company	Town	Region	Turnover (Euro)	Employees	Sector
LUSIAVES - INDÚSTRIA E COMÉRCIO AGRO-ALIMENTAR, S.A.	Figueira da Foz	Centro	213 705 721	946	Slaughter of poultry (meat production)
SICASAL-INDÚSTRIA E COMÉRCIO DE CARNES, S.A.	Mafra	Lisboa e Vale do Tejo	115 461 104	658	Manufacture of meat products
NOBRE ALIMENTAÇÃO, LDA	Rio Maior	Lisboa e Vale do Tejo	103 625 820		Manufacture of meat products
MONTE D`ALVA - ALIMENTAÇÃO, S.A.	Montijo	Lisboa e Vale do Tejo	99 986 702	551	Cattle slaughtering (meat production)
AVIPRONTO - PRODUTOS ALIMENTARES, S.A	Azambuja	Lisboa e Vale do Tejo	86 532 645	453	Slaughter of poultry (meat production)
KILOM - SOCIEDADE AGRÍCOLA E PECUÁRIA DA QUINTA DOS LOMBOS, S.A.	Loures	Lisboa e Vale do Tejo	66 067 545	227	Slaughter of poultry (meat production)
AVIBOM - AVÍCOLA, S.A.	Torres Vedras	Lisboa e Vale do Tejo	64 278 997	364	Slaughter of poultry (meat production)
CARNES VALINHO, S. A.	Santarém	Lisboa e Vale do Tejo	53 593 909	92	Cattle slaughtering (meat production)
AVICASAL - SOCIEDADE AVÍCOLA, S.A.	São Pedro do Sul	Centro	48 907 720	251	Slaughter of poultry (meat production)

4.1.2 Fish and aquaculture products³⁶

Table 4.2: Main players (from AEP's Top 50 Companies in the sector "Food")

Company	Town	Region	Turnover (Euro)	Employees	Sector
COFACO AÇORES, INDUSTRIA CONSERVAS, S.A.	Lisboa	Lisboa e Vale do Tejo	72 579 362	514	Preservation of fishery and aquaculture products in olive oil
EUROPEAN SEAFOOD INVESTMENTS PORTUGAL, S.A.	Peniche	Centro	68 040 399	671	Preservation of fishery and aquaculture products in olive oil

³⁵ [http://www.fipa.pt/uploads/fotos_artigos/files/Ambicao2020\(1\).pdf](http://www.fipa.pt/uploads/fotos_artigos/files/Ambicao2020(1).pdf)

³⁶ Supermarket chains like Sonae MC and Jeronimo Martins are major sellers of these products and are supporting a large R&D consortium for new product developments based on blue bioresources

BRASMAR - COMÉRCIO DE PRODUTOS ALIMENTARES, S.A.	Trofa	Norte	65 816 098	126	Preparation of fishery and aquaculture products
RUI COSTA E SOUSA & IRMÃO, S.A	Tondela	Centro	53 167 991	115	Salting, drying and other processing of fishery and aquaculture products
GELPEIXE - ALIMENTOS CONGELADOS, S.A	Loures	Lisboa e Vale do Tejo	48 881 118	127	Preparation of fishery and aquaculture products
PASCOAL & FILHOS, S.A.	Ilhavo	Centro	48 535 652	331	Salting, drying and other processing of fishery and aquaculture products

4.1.3 Fruit and vegetables

Table 4.3: Main players (from AEP's Top 50 Companies in the sector "Food")

Company	Town	Region	Turnover (Euro)	Employees	Sector
SOVENA PORTUGAL - CONSUMER GOODS, S.A.	Oeiras	Lisboa e Vale do Tejo	301 124 777	231	Refining of olive oil, oils and fats
VICTOR GUEDES - INDUSTRIA E COMÉRCIO, S.A.	Lisboa	Lisboa e Vale do Tejo	117 451 385	101	Production of olive oil
SUGAL - ALIMENTOS, S.A.	Benavente	Lisboa e Vale do Tejo	98 716 156	311	Processing and preserving of fruit and vegetables by other processes
ITALAGRO - INDÚSTRIA DE TRANSFORMAÇÃO DE PRODUTOS ALIMENTARES, S.A	Vila Franca de Xira	Lisboa e Vale do Tejo	64 678 049	70	Processing and preserving of fruit and vegetables by other processes

4.1.4 Beverages

Table 4.4: Main players (from AEP's Top 50 Companies in the sector "Food")

Company	Town	Region	Turnover (Euro)	Employees	Sector
NESTLÉ PORTUGAL, S.A.	Oeiras	Lisboa e Vale do Tejo	442 323 324	1 613	Coffee and tea industry
UNICER - BEBIDAS, S.A	Matosinhos	Norte	418 796 978	931	Manufacture of beer
SUMOL + COMPAL, MARCAS, S.A	Oeiras	Lisboa e Vale do Tejo	297 619 219	1 073	Manufacture of soft drinks and other non-alcoholic beverages, n.e.
SCC - SOCIEDADE CENTRAL DE CERVEJAS E BEBIDAS, S.A.	Vila Franca de Xira	Lisboa e Vale do Tejo	291 321 658	621	Brewery
REFRIGE - SOCIEDADE INDUSTRIAL DE REFRIGERANTES, S.A	Setúbal	Lisboa e Vale do Tejo	147 570 344	427	Manufacture of soft drinks and other non-alcoholic beverages, n.e.
SOGRAPE VINHOS, S.A.	Vila Nova de Gaia	Norte	140 252 224	594	Production of common and liqueur wines

NOVADELTA - COMÉRCIO E INDÚSTRIA DE CAFÉS, S.A	Campo Maior	Alentejo	113 428 330	396	Coffee and tea industry
SYMINGTON FAMILY ESTATES, VINHOS, LDA.	Vila Nova de Gaia	Norte	83 129 656		Production of common and liqueur wines
SYMINGTON - VINHOS, S.A.	Vila Nova de Gaia	Norte	76 915 521	366	Production of common and liqueur wines

4.1.5 Dairy products

Table 4.5: Main players (from AEP's Top 50 Companies in the sector "Food")

Company	Town	Region	Turnover	Employees	Sector
LACTOGAL - PRODUTOS ALIMENTARES, S.A	Porto	Norte	731 434 125	1540	Milk and dairy industries
FROMAGERIES - BEL PORTUGAL, S.A	Lisboa	Lisboa e Vale do Tejo	121 343 693	550	Milk and dairy industries
UNIÃO COOP. AGRICOLAS DE LACTICINIOS PROD. LEITE DA ILHA S.MIGUEL, CRL	Ponta Delgada	Açores	67 330 565	237	Milk and dairy industries
PRONICOL - PRODUTOS LÁCTEOS, S.A.	Angra do Heroísmo	Açores	63 387 546	227	Milk and dairy industries
PARMALAT PORTUGAL - PRODUTOS ALIMENTARES, LDA	Sintra	Lisboa e Vale do Tejo	56 136 923	217	Milk and dairy industries

4.1.6 Cereal-based foods, bakery, sweets

Table 4.6: Main players (from AEP's Top 50 Companies in the sector "Food")

Company	Town	Region	Turnover (Euro)	Employees	Sector
SIDUL AÇUCARES, UNIPessoal, LDA	Loures	Lisboa e Vale do Tejo	178 602 704	202	Sugar industry
CEREALIS - PRODUTOS ALIMENTARES, S.A.	Maia	Norte	112 706 710	446	Manufacture of macaroni, noodles, couscous and similar
CEREALIS - MOAGENS, S.A.	Maia	Norte	98 568 792	190	Grinding of cereals
RAR - REFINARIAS DE AÇÚCAR REUNIDAS, S.A.	Porto	Norte	95 090 775	162	Sugar industry
DAI - SOCIEDADE DE DESENVOLVIMENTO AGRO-INDUSTRIAL, S.A.	Coruche	Lisboa e Vale do Tejo	61 744 432	138	Sugar industry
FIMA - PRODUTOS ALIMENTARES, S.A.	Lisboa	Lisboa e Vale do Tejo	59 618 749	169	Manufacture of margarines and similar edible fats
PANRICO - PRODUTOS ALIMENTARES, LDA.	Sintra	Lisboa e Vale do Tejo	56 963 408	429	Bakery
FRULACT - INDÚSTRIA AGRO-ALIMENTAR, S.A.	Maia	Norte	53 030 714	287	Manufacture of jams, jellies, jellies and marmalades
MOAGEM CERES A. DE FIGUEIREDO & IRMÃO, S.A	Porto	Norte	52 023 737	73	Grinding of cereals

4.2 Leather goods

Leather represents a traditional industry, well established in the North of the country, between Porto and Guimaraes. According to the sector association AICCAPS (Associação Portuguesa dos Industriais de Calçado, Componentes, Artigos de Pele e seus Sucedâneos), more than 1,900 companies and 45,000 workers are employed in the sector.

According to an article by M.J Ferreira³⁷, between 0.1 and 0.2 kg of leather residues, often contaminated with heavy metals, are produced for each pair of shoes. Given that Portugal exported 81 billion pair of shoes in 2016 (AICCAPS data), residues would amount to over 8 million tons.

The table below shows the main players according to AEP's database.

Table 4.7: Main players (from AEP's Top 10 Companies in the sector "Leather")

Company	Town	Region	Turnover (Euro)	Employees	Sector
GABOR PORTUGAL - INDUSTRIA DE CALÇADO, LDA.	Barcelos	Norte	91 249 355	1333	Manufacture of footwear
ECCO'LET (PORTUGAL) - FABRICA DE SAPATOS, LDA	Santa Maria da Feira	Centro	41 976 693	816	Manufacture of footwear
FORTUNATO O. FREDERICO & CA LDA	Guimarães	Norte	33 965 468	344	Manufacture of footwear
ACO - FABRICA DE CALÇADO, S.A.	Vila Nova Famalicão	Norte	33 490 008	381	Manufacture of footwear
COURO AZUL - INDÚSTRIA E COMÉRCIO DE COUROS, S.A.	Alcanena	Lisboa e Vale do Tejo	31 650 830	230	Manufacture of footwear
MARSIPEL - INDÚSTRIA DE CURTUMES, S.A.	Alcanena	Lisboa e Vale do Tejo	28.193.723	217	Manufacture of footwear
JEFAR - INDÚSTRIA DE CALÇADO, S.A.	Felgueiras	Norte	26.253.497	327	Manufacture of footwear
ARA SHOES PORTUGUESA - FÁBRICA DE CALÇADO, SOCIEDADE UNIPessoal, LDA.	Vila Nova de Gaia	Norte	26.061.249	310	Manufacture of footwear
CLAUDIFEL - INDUSTRIA CALÇADO, LDA	Felgueiras	Norte	22.368.935	211	Manufacture of footwear
MEPHISTO PORTUGUESA - FÁBRICA DE CALÇADO, LDA.	Viana do Castelo	Norte	22.349.199	424	Manufacture of footwear

4.3 Wood and cork

Portugal is the global leader in the production of cork, with 49% of the total global production (data from APCOR – Associação Portuguesa da Cortiça). 84% of cork oak is grown in Alentejo. In the field of cork, the Amorim group is the main company in Portugal and globally.

Construction and furniture are represented as well, especially in the northern part of the country.

³⁷ M.J. Ferreira, 2012, Contribuições para a Gestão de Resíduos de Couro Curtido com Crómio da Indústria do Calçado

The table below shows the main players according to AEP's database.

Table 4.8: Main players (from AEP's Top 50 Companies in the sector "Wood and cork")

Company	Town	Region	Turnover (Euro)	Employees	Sector
SONAE INDÚSTRIA - PRODUÇÃO E COMERCIALIZAÇÃO DE MADEIRA, S.A	Maia	Norte	260 951 057	580	Manufacture of wooden particle board
AMORIM & IRMÃOS, S.A	Santa Maria da Feira	Centro	233 251 454	953	Manufacture of cork stoppers
LUSO FINSA - INDÚSTRIA E COMÉRCIO DE MADEIRAS, S.A.	Nelas	Centro	123 475 549	341	Manufacture of wood fiber panels
AMORIM REVESTIMENTOS, S.A	Santa Maria da Feira	Centro	99 846 927	461	Manufacture of other products of cork
AMORIM FLORESTAL, S.A.	Santa Maria da Feira	Centro	92 228 329	404	Cork preparation industry
AMORIM CORK COMPOSITES, S.A	Santa Maria da Feira	Centro	73 051 852	411	Manufacture of other products of cork
BI-SILQUE, PRODUTOS DE COMUNICAÇÃO VISUAL, S.A.	Ovar	Centro	42 348 221	178	Manufacture of other products of wood
PIEDADE, S.A.	Santa Maria da Feira	Centro	41 055 763	66	Manufacture of cork stoppers
VICAIMA - INDÚSTRIA DE MADEIRAS E DERIVADOS, S.A.	Vale de Cambra	Centro	39 247 621	568	Manufacture of other carpentry and joinery
ÁLVARO COELHO & IRMÃOS, S.A	Santa Maria da Feira	Centro	35 824 477	150	Manufacture of cork stoppers
CORK SUPPLY PORTUGAL, S.A.	Santa Maria da Feira	Centro	34 806 509	135	Manufacture of cork stoppers
SOCORI - SOCIEDADE DE CORTIÇAS DE RIO MEÃO, S.A.	Santa Maria da Feira	Centro	32 861 988	275	Cork preparation industry
M. A. SILVA - CORTIÇAS LDA	Santa Maria da Feira	Centro	30 391 766	78	Manufacture of cork stoppers
PIETEC - CORTIÇAS S.A.	Santa Maria da Feira	Centro	24 966 258	121	Manufacture of cork stoppers
PELLETS POWER, LDA.	Mortágua	Centro	23 696 642	40	Manufacture of other products of wood
PALSER - BIOENERGIA E PALETES, LDA.	Sertã	Centro	23 018 682	161	Manufacture of wooden containers
GRANORTE - REVESTIMENTOS DE CORTIÇA, LDA.	Santa Maria da Feira	Centro	20 260 157	145	Manufacture of other products of cork
JOSÉ AFONSO & FILHOS, S.A.	Oleiros	Centro	19 338 789	105	Wood Products
PINHOSE - INDÚSTRIA DE MADEIRAS DA SERTÃ, LDA.	Sertã	Centro	17 790 220	62	Wood Products
ENERPELLETS - PRODUÇÃO, COMERCIALIZAÇÃO DE PELLETS DE MADEIRA, S.A	Pedrógão Grande	Centro	17 500 067	42	Wood Products
PINWELLS, S.A.	Arganil	Centro	16 772 409	37	Wood Products
ANTÓNIO ALMEIDA, CORTIÇAS, S.A.	Santa Maria da Feira	Centro	16 730 489	109	Manufacture of cork stoppers
RELVAS II - ROLHAS DE CHAMPANHE, S.A	Santa Maria da Feira	Centro	16 431 257	128	Cork preparation industry
DESICOR - INDUSTRIAS, S.A.	Vila Nova de Gaia	Norte	16 371 741	142	Manufacture of other products of wood
J. & J. TEIXEIRA, S.A	Vila Nova de Gaia	Norte	16 297 685	213	Manufacture of other carpentry and joinery
SEDACOR - SOCIEDADE EXPORTADORA DE ARTIGOS DE CORTIÇA, LDA.	Santa Maria da Feira	Centro	15 912 741	78	Manufacture of cork stoppers

LAFITTE CORK PORTUGAL, S.A.	Santa Maria da Feira	Centro	15 426 082	97	Manufacture of cork stoppers
A. MILNE CARMO, S.A.	Lisboa	Lisboa e Vale do Tejo	15 169 324	77	Impregnation of wood
FIBROMADE - DOMINGOS BARROS - FOLHAS DE MADEIRA, S.A.	Paredes	Norte	14 334 319	107	Manufacture of veneer, plywood, lamella and other panels

4.4 Pulp and paper

The Portuguese pulp and paper industry processes around 7 million m³ of wood per year. The main species used for paper-making is eucalyptus (data from CELPA - Associação da Indústria Papeleira).

The main mills are owned by The Navigator Company³⁸, Altri, Europac and Renova. All of them recover energy from biomass residues. According to The Navigator Company, 5% of the total energy produced in Portugal annually comes from its own biomass plants.

The table below shows the main players according to AEP's database. This table includes Portucel and Soporcel, the two entities that later merged into The Navigator Company.

Table 4.9: Main players (from AEP's Top 50 Companies in the sector "Pulp and paper")

Company	Town	Region	Turnover (Euro)	Employees	Sector
SOPORCEL - SOCIEDADE PORTUGUESA DE PAPEL, S.A (now part of The Navigator company)	Figueira da Foz	Centro	509 247 874	696	Manufacture of paper and paperboard (other than corrugated paper)
PORTUCEL, S.A. (now part of The Navigator company)	Setúbal	Lisboa e Vale do Tejo	425 249 773	817	Manufacture of pulp and paper
CELULOSE BEIRA INDUSTRIAL (CELBI), S.A.	Figueira da Foz	Centro	383 733 116	233	Manufacture of pulp and paper
ABOUT THE FUTURE - EMPRESA PRODUTORA DE PAPEL, S.A	Setúbal	Lisboa e Vale do Tejo	339 725 711	288	Manufacture of paper and paperboard (other than corrugated paper)
SOPORCEL PULP - SOCIEDADE PORTUGUESA DE CELULOSE, S.A. (now part of The Navigator company)	Figueira da Foz	Centro	235 645 926	2	Manufacture of pulp and paper
EUROPA&C KRAFT VIANA, S.A	Viana do Castelo	Norte	226 531 883	319	Manufacture of paper and paperboard (other than corrugated paper)
PORTUCEL PAPEL SETÚBAL, S.A. (now part of The Navigator company)	Setúbal	Lisboa e Vale do Tejo	158 151 063	2	Manufacture of paper and paperboard (other than corrugated paper)

³⁸ The Navigator Company is the leading European manufacturer of uncoated printing and writing paper and bleached eucalyptus pulp. The Navigator Company is also a leading operator in the biomass energy sector. More than 3,000 employees. Turnover: 1,6 billion euros. three major industrial sites in Cacia, Figueira da Foz and Setúbal

CELTEJO - EMPRESA DE CELULOSE DO TEJO, S.A.	Vila Velha de Rodão	Lisboa e Vale do Tejo	121 905 933	195	Manufacture of pulp and paper
RENOVA - FÁBRICA DE PAPEL DO ALMONDA, S.A.	Torres Novas	Lisboa e Vale do Tejo	111 911 659	592	Manufacture of paper and paper products for household and sanitary purposes
SAICA PACK PORTUGAL, S.A.	Loures	Lisboa e Vale do Tejo	85 006 178	440	Manufacture of corrugated paper and paperboard (including packaging)
EUROPA&C EMBALAGEM, S.A.	Sintra	Lisboa e Vale do Tejo	78 743 299	350	Manufacture of corrugated paper and paperboard (including packaging)
CAIMA - INDÚSTRIA DE CELULOSE, S.A.	Constância	Lisboa e Vale do Tejo	62 963 583	185	Manufacture of pulp and paper
AMS - BR STAR PAPER, S.A.	Vila Velha de Rodão	Lisboa e Vale do Tejo	47 836 866	115	Manufacture of paper and paperboard (other than corrugated paper)
SEDA IBÉRICA - EMBALAGENS, S.A.	Oeiras	Lisboa e Vale do Tejo	44 473 928	266	Manufacture of other paper and paperboard
AMCOR FLEXIBLES PORTUGAL LDA	Vila Nova de Gaia	Norte	37 632 943	176	Manufacture of other paper and paperboard
SUAVECEL - INDÚSTRIA TRANSFORMADORA DE PAPEL S.A	Lisboa	Lisboa e Vale do Tejo	32 040 783	101	Manufacture of paper and paper products for household and sanitary purposes
FÁBRICA DE PAPEL E CARTÃO DA ZARRINHA, S.A	Santa Maria da Feira	Centro	32 030 451	191	Manufacture of corrugated paper and paperboard (including packaging)
GRAPHICSLEADERPACKAGING - ARTES GRÁFICAS, S.A.	Vila Nova de Gaia	Norte	27 953 228	147	Manufacture of other paper and paperboard
FAPAJAL - FÁBRICA DE PAPEL DO TOJAL, S.A.	Loures	Lisboa e Vale do Tejo	26 473 828	127	Manufacture of paper and paperboard (other than corrugated paper)
GOPACA - FÁBRICA DE PAPEL DE CARTÃO, S.A	Santa Maria da Feira	Centro	25 194 201	100	Manufacture of corrugated paper and paperboard (including packaging)
SMURFIT KAPPA PORTUGAL, S.A.	Santa Maria da Feira	Centro	24 974 144	140	Manufacture of corrugated paper and paperboard (including packaging)
EUROPA&C CARTÃO OVAR, S.A.	Ovar	Centro	23 356 518	96	Manufacture of corrugated paper and paperboard (including packaging)
PRADO - CARTOLINAS DA LOUSÃ, S.A.	Lousã	Centro	20 415 590	127	Manufacture of paper and paperboard (other than corrugated paper)

FIRMO - PAPÉIS E PAPELARIAS, S.A.	Porto	Norte	20 337 405	179	Manufacture of paper stationery
TREVIPAPEL - TRANSFORMAÇÃO E CORTE DE PAPEL, LDA.	Lousã	Centro	19 509 205	86	Manufacture of paper and paper products for household and sanitary purposes
SOCIEDADE TRANSFORMADORA DE PAPÉIS VOUGA, LDA	Santa Maria da Feira	Centro	19 354 265	145	Manufacture of corrugated paper and paperboard (including packaging)
SEBASTIÃO & MARTINS, S.A	Guimarães	Norte	18 794 538	127	Manufacture of corrugated paper and paperboard (including packaging)
FINIECO - INDÚSTRIA E COMÉRCIO DE EMBALAGENS, S.A	Santo Tirso	Norte	16 530 900	72	Manufacture of other paper and paperboard
SACOPOR - SOCIEDADE DE EMBALAGENS E SACOS DE PAPEL, S.A.	Loures	Lisboa e Vale do Tejo	15 057 346	54	Manufacture of other paper and paperboard
PRADO KARTON - COMPANHIA DE CARTÃO, S.A.	Tomar	Lisboa e Vale do Tejo	13 886 574	113	Manufacture of paper and paperboard (other than corrugated paper)
CARTONARTE - INDUSTRIA DE CARTONAGEM, LDA	Marinha Grande	Centro	12 739 439	67	Manufacture of corrugated paper and paperboard (including packaging)
CEMOPOL - CELULOSES MOLDADAS PORTUGUESAS, S.A.	Pombal	Centro	12 549 759	47	Manufacture of other articles of paper pulp, paper and paperboard
CALHEIROS EMBALAGENS, S.A.	Valongo	Norte	12 156 354	113	Manufacture of other paper and paperboard
PAPELEIRA PORTUGUESA, S.A.	Santa Maria da Feira	Centro	12 135 143	80	Manufacture of paper and paperboard (other than corrugated paper)
FINNCO-ART - COMPLEXOS TÉCNICOS, UNIPESSOAL, LDA.	Benavente	Lisboa e Vale do Tejo	11 633 185	19	Manufacture of other paper and paperboard
CARTONAGEM TRINDADE - INDÚSTRIA, S.A.	São João da Madeira	Madeira	10 817 791	89	Manufacture of other paper and paperboard
GOMA - CAMPS PORTUGAL - FABRICANTE DE PAPEL, S.A	Constância	Lisboa e Vale do Tejo	10 647 802	70	Manufacture of paper and paper products for household and sanitary purposes
FÁBRICA DE PAPEL PONTE REDONDA, S.A	Espinho	Centro	10 453 704	126	Manufacture of corrugated paper and paperboard (including packaging)
GRÁFICA IDEAL DE ÁGUEDA - INDUSTRIAS GRÁFICAS, S.A.	Agueda	Centro	10 171 750	100	Manufacture of other paper and paperboard

TUBEMBAL - TRANSFORMAÇÃO DE PAPEL E COMÉRCIO DE EMBALAGENS, S.A.	Trofa	Norte	8 625 430	44	Manufacture of other paper and paperboard
NOVOTIPO EUROPA - INDÚSTRIA E COMÉRCIO DE EMBALAGENS, S.A.	Sintra	Lisboa e Vale do Tejo	8 459 629	97	Manufacture of other paper and paperboard
ALBANO R. N. ALVES - INDUSTRIA DE TRANSFORMAÇÃO DE PAPEL, S.A	Sintra	Lisboa e Vale do Tejo	8 409 676	34	Manufacture of other articles of paper pulp, paper and paperboard
JOSÉ NEVES & CIA., LDA.	Guimarães	Norte	7 680 225	29	Manufacture of corrugated paper and paperboard (including packaging)
NATURAL - INDUSTRIA DE PAPEL, S.A.	Viseu	Centro	7 214 997	96	Manufacture of paper and paper products for household and sanitary purposes
SPIRALPACK - MANIPULADOS DE PAPEL, S.A.	Trofa	Norte	6 699 581	52	Manufacture of other articles of paper pulp, paper and paperboard
CARTONAGEM SÃO TIAGO, LDA.	Braga	Norte	6 526 220	49	Manufacture of corrugated paper and paperboard (including packaging)
ECC - EMPRESA DE CARTÃO CANELADO, S.A.	Santa Maria da Feira	Centro	6 347 417	23	Manufacture of corrugated paper and paperboard (including packaging)
NUNEX - WORLDWIDE, S.A.	Viana do Castelo	Norte	5 965 928	16	Manufacture of paper and paper products for household and sanitary purposes
CARTONAGEM CARDOSO, S.A.	Santa Maria da Feira	Centro	5 763 734	44	Manufacture of other paper and paperboard
CARTONAGEM EXPRESSO, LDA	Vizela	Norte	5 747 981	86	Manufacture of corrugated paper and paperboard (including packaging)

4.5 Chemical and petrochemical industry

Portugal hosts local branches of international players, such as DOW, Repsol and Solvay. ADP Fertilizantes is owned by Fertiberia from Spain. Some national industries are also present, namely:

- CUF – QUIMICOS INDUSTRIAIS; is the largest independent chemical industry group in Portugal. It produces both organic (aniline and derivatives) and inorganic (chloro-alkalines) chemicals.
- ARTLANT PTA used to be the second largest producer of PTA in Europe. Due to its bankruptcy, its 700kt/y PTA plant is currently run by the state-owned bank CGD, looking for investors to relaunch it.
- IBEROL produces derivatives from cereals and oil seed plants, namely biodiesel, vegetable oils, bagasse.

The table below shows the main players according to AEP's database.

Table 4.10: Main players (from AEP's Top 50 Companies in the sector "Chemical and petrochemical industry")

Company	Town	Region	Turnover (Euro)	Employees	Sector
REPSOL POLÍMEROS, S.A.	Sines	Alentejo	637 885 959	453	Manufacture of plastics in primary forms
CUF - QUIMICOS INDUSTRIAIS, S.A.	Estarreja	Centro	305 641 658	191	Manufacture of other organic basic chemicals, n.e.
ARTLANT PTA, S.A.	Lisboa	Lisboa e Vale do Tejo	243 832 307	133	Manufacture of other organic basic chemicals, n.e.
ADP FERTILIZANTES, S.A.	Vila Franca de Xira	Lisboa e Vale do Tejo	232 787 462	218	Manufacture of fertilizers, nitrogen compounds and nitrogen compounds
IBEROL - SOCIEDADE IBÉRICA DE BIOCOMBÚSTIVEIS E OLEAGINOSAS, S.A	Lisboa	Lisboa e Vale do Tejo	178 155 758	96	Manufacture of biodiesel
COMPANHIA INDUSTRIAL DE RESINAS SINTÉTICAS CIRES, LDA.	Estarreja	Centro	164 740 365	109	Manufacture of plastics in primary forms
DOW PORTUGAL - PRODUTOS QUIMICOS, SOCIEDADE UNIPessoal, LDA	Estarreja	Centro	121 991 417	100	Manufacture of plastics in primary forms
FISIPE, S.A.	Barreiro	Lisboa e Vale do Tejo	118 028 899	330	Manufacture of synthetic or artificial fibers
SAPEC - AGRO, S.A	Setúbal	Lisboa e Vale do Tejo	101 240 232	303	Manufacture of pesticides and other agrochemical products
CIN - CORPORAÇÃO INDUSTRIAL DO NORTE, S.A	Maia	Norte	89 499 075	552	Manufacture of paints (other than printing), varnishes, mastics and similar products
SOCIEDADE PORTUGUESA DO AR LIQUIDO (ARLIQUIDO), LDA	Oeiras	Lisboa e Vale do Tejo	88 688 614	182	Manufacture of industrial gases
FÁBRICA TORREJANA, S.A.	Torres Novas	Lisboa e Vale do Tejo	87 940 228	53	Manufacture of biodiesel
PRIO BIOCOMBUSTÍVEIS, S.A	Oliveira de Frades	Centro	80 382 686	28	Manufacture of biodiesel

COLQUIMICA - INDÚSTRIA NACIONAL DE COLAS, S.A.	Valongo	Norte	70 674 047	109	Manufacture of glues
CABOPOL - POLYMER COMPOUNDS, S.A.	Porto de Mós	Centro	69 579 638	100	Manufacture of plastics in primary forms
EURORESINAS - INDÚSTRIAS QUÍMICAS, S.A.	Sines	Alentejo	67 210 209	67	Manufacture of plastics in primary forms
HEMPEL (PORTUGAL), LDA	Palmela	Lisboa e Vale do Tejo	63 270 967	137	Manufacture of paints (other than printing), varnishes, mastics and similar products
RECKITT BENCKISER (PORTUGAL), S.A.	Lisboa	Lisboa e Vale do Tejo	62 655 316	121	Manufacture of soap, detergents and glycerol
SOLVAY PORTUGAL - PRODUTOS QUÍMICOS, S.A.	Vila Franca de Xira	Lisboa e Vale do Tejo	53 315 862	229	Manufacture of other inorganic basic chemicals

05

CLUSTERS AND
ASSOCIATIONS

5. Clusters and associations

P-BIO³⁹ is the national association of biotech industries. Most of its members belong to the pharmaceutical and diagnostics sectors. Among them, an interesting player is **BIOCANT Park**⁴⁰, a biotechnology incubator located in Coimbra. BIOCANT is a cluster of companies and R&D institutions of excellence with a strong commitment to science education and entrepreneurship, covering the entire innovation pipeline. Another member, **Biotrend**⁴¹ focuses on bioprocesses for the production of bio-based chemicals, materials and fuels from renewable raw materials, including complex industrial by-products and wastes. SilicoLife accelerates the design of microbial strains, using metabolic engineering and synthetic biology approaches, for the production of specific target compounds such as biofuels, chemicals, food ingredients or biopolymers.

BlueBio Alliance⁴², the Portuguese platform for marine bioresources and blue biotech, is a cluster of companies and research centres dedicated to accelerate the development of value chains for the blue economy

Oceano Azul Foundation⁴³, an organization dedicated to ocean sustainability.

BLC3⁴⁴ - Technology and Research Campus a non-profit association is the first Portuguese entity devoted to the development of biorefineries (2nd and 3rd generation), bioeconomy and "Smart Regions", focusing on the circular economy concept.

Portugal also has two associations dedicated to circular economy, **BIOEC**⁴⁵ and **CEP**⁴⁶. The first one is hosted at BLC3's premises. The second one has been active in the promotion of recycling and reuse of food waste in 2017.

The Portuguese government has supported the creation of an initiative named **Coligação para o Crescimento Verde** (Green growth alliance)⁴⁷ grouping public and private stakeholders with a consulting role for the government. The association is organised along 10 working groups: water, waste, agriculture and forest, energy and climate, transport, industry, biodiversity, cities and landscape, sea, and tourism.

ANMPME – Associação Nacional das Pequenas e Medias Empresas is the national association grouping SMEs in all sectors.

IAPMEI - Agência para a Competitividade e Inovação is the public institution dedicated to supporting SMEs. It has territorial branches covering the whole continental Portugal (north to south: Bragança, Braga, Porto, Aveiro, Guarda, Viseu, Coimbra, Covilha, Leiria, Lisbon, Evora, Faro).

Recently (February 2017) four clusters from the Agro-food industry united in a large umbrella cluster, named **Portuguese AgroFood Cluster**. The four founding members are Portugal Foods⁴⁸ (nationwide food industry

39 <http://p-bio.org>

40 <http://www.biocant.pt/>

41 www.biotrend.biz

42 <http://bluebioalliance.pt>

43 <https://www.oceanoazulfoundation.org>

44 www.blc3.pt

45 <http://www.bioec.pt/>

46 www.circulareconomy.pt

47 <http://www.crescimentoverde.gov.pt>

48 <https://www.portugalfoods.org>

cluster), InovCluster⁴⁹ (farmers' cluster from Centro), Agrocluster⁵⁰ (farmers' cluster from Ribatejo) and Portugal Fresh⁵¹ (nationwide fruit and vegetables producers' cluster). The four original organisations will keep existing as independent entities, but will formulate joint programmes and strategies. The new umbrella cluster will be an interlocutor for the government for drafting strategic agendas for the sector. Buggypower is a member of Portugal Foods.

The Maritime cluster cluster Fórum Oceano – Associação da Economia do Mar ⁵² joins naval industry, sea transport and fisheries. It also includes producers of algae.

The Portuguese Aquaculture Association (APA), is the national aquaculture producers association, representing all kinds of aquaculture system production and species in Portugal. APA contributes to the development of the aquaculture industry.

CentroHabitat⁵³ groups entities involved in energy efficiency in buildings, among whom players from the forest (in particular cork) industry. RAIZ (BIC associate member), from the Navigator group, is a member of the cluster.

EnergyIN⁵⁴ - the Competitiveness and Technology Cluster for Energy - is devoted to renewable energy, including from biomass. EnergyIN has 100 members, of which 25 SMEs and 5 large industries.

The Forest cluster is named AIFF⁵⁵. It groups all major players along four value chains: bark (in particular cork); wood; pulp and paper; research and services.

SmartWaste⁵⁶ is the cluster of reference for waste management and conversion. Within SmartWaste, Interfileiras⁵⁷ groups the organisations dedicated to recycling of specific material categories: wood, metal, paper and cardboard, plastics and glass.

AIPQR⁵⁸ is the cluster grouping (petro)chemical industries.

NOVA.id.FCT⁵⁹ is a private non-profit research organization dedicated to Research and Development and Innovation (R&D+I) activities.

At local level, SMEs are often associated to Technological parks and incubators (see next chapter).

BIC INNOVATION⁶⁰, in the Norte region, is a regional cluster dedicated to development of local businesses. Together with their homologue in the Galizia Region (Spain), they launched a cross border initiative named Bio Investor, focused on support to bioeconomy investment for innovative SMEs.

Appendix A includes the list of members of the clusters mentioned above.

49 <http://www.inovcluster.pt/>

50 <http://agrocluster.pt/>

51 <http://www.portugalfresh.org>

52 <http://www.oceano21.org>

53 <http://www.centrohabitat.net>

54 www.energyin.com

55 <http://www.aiff.pt/>

56 <http://www.smartwasteportugal.com/pt/>

57 <http://interfileiras.pt>

58 <http://www.aipqr.pt>

59 <http://www.novaidfct.pt>

60 <http://bicminho.eu>

06

CAMPUS,
INCUBATORS &
TECHNOLOGY
PARKS

6. Campus, incubators and technology parks

UPTEC - Parque de Ciência e Tecnologia da Universidade do Porto⁶¹, the Science and Technology Park annexed to Porto University, is the largest of these institutions in the North of Portugal. It is organised along four axes:

- Technology;
- Creative industry;
- Sea;
- Biotech.

It is linked to 205 enterprises (between resident and partners), including its own start-ups. In particular, the Biotech orientation counts 18 enterprises. UPTEC is also the leading entity in **PortusPark**, the network of incubators in northern Portugal.

LISPOLIS⁶² is the Science and Technology Park of Lisboa. It includes 45 resident enterprises, 2 of which belong to the biotech sector. LISPOLIS is more focused on startup incubation than on research spinoff; however it has two departments of the University of Lisbon as partners (the Instituto Tecnico and the Faculdade de Ciencias). Besides LISPOLIS, Lisboa is home to several fablabs and startup hubs that, according to the EU Startups magazine, is turning the city into “one of the leading startup hubs in Europe”⁶³. The association grouping several of them is **Startup Lisboa**⁶⁴.

TAGUSPARK⁶⁵, located in Oeiras in the Lisboa e Vale do Tejo region, is home to 93 companies, 3 R&D centers, 1 university (the Instituto Superior Tecnico) and 26 startups. The **Agrotech Campus**, also located in Oeiras, is the first technology park in Portugal dedicated to agro, food and feed.

Coimbra, home to the oldest and most prestigious university in Portugal, hosts **Instituto Pedro Nunes (IPN)**⁶⁶. IPN is directly linked to the University and is one of the largest technology transfer centres in Portugal. According to its director it was named Best Science Based Incubator in the world (in 2010) and the combined revenues of incubated and graduated companies surpassed €120 million (in 2015)⁶⁷. Also in Coimbra the **IPARQUE**⁶⁸ was launched as a complementary initiative by the local Chamber of Commerce. However the Park has only incorporated 5 startups as of now.

The University of Algarve in Faro also launched a startup incubator named **CRIA**⁶⁹. Several of the 20 incubated companies operate in precision agriculture and aquaculture. One of them is spin-off Sparos, a microalgae company.

61 <http://uptec.up.pt>

62 <http://www.lispolis.pt/>

63 <http://www.eu-startups.com/2016/11/innovation-and-history-go-hand-to-hand-in-coimbra-portugal-interview-with-jorge-pimenta-ipn/>

64 <http://www.startuplisboa.com/>

65 <http://www.taguspark.pt/>

66 <https://www.ipn.pt>

67 <http://www.eu-startups.com/2016/11/innovation-and-history-go-hand-to-hand-in-coimbra-portugal-interview-with-jorge-pimenta-ipn/>

68 <http://www.coimbraiparque.pt>

69 <http://www.cria.pt>

The following table shows a non-exhaustive list of Science Parks and incubators in Portugal.

Table 6.1: Campus, incubators and technology parks

Entity	Town	Region
Oliva Creative Factory	São João da Madeira	Açores
Sanjotec	São João da Madeira	Açores
Nonagon	Azores	Açores
CEIM	Madeira	Açores
Madeira Tecnopolo	Madeira	Açores
INOVPOINT	Abrantes	Alentejo
Startup Alentejo	Beja	Alentejo
PACT	Évora	Alentejo
Sines Tecnopolo	Sines	Alentejo
Ualg CRIA	Faro	Algarve
Centro de Incubação de Aveiro	Aveiro	Centro
IEUA	Aveiro	Centro
Centro Incubador de Caldas da Rainha	Caldas da Rainha	Centro
BioCant	Cantanhede	Centro
ESA Business Incubation Centre	Coimbra	Centro
Instituto Pedro Nunes	Coimbra	Centro
iParque	Coimbra	Centro
Incubadora de Empresas da Figueira da Foz	Figueira da Foz	Centro
Incubadora D. Dinis	Leiria	Centro
OPEN	Marinha Grande	Centro
Feirapark	Santa Maria da Feira	Centro
Centro de Inovação Empresarial da Beira Interior	Covilhã	Centro
Parkurbis	Covilhã	Centro
Curia Tecnoparque	Curia	Centro
Parque Tecnológico Óbidos	Óbidos	Centro
Associação Empresarial da Região de Viseu	Viseu	Centro
Centro de Incubação de Lisboa	Lisboa	Lisboa e Vale do Tejo
Dock 38	Lisboa	Lisboa e Vale do Tejo
EDP Starter	Lisboa	Lisboa e Vale do Tejo
EggNEST SGPS	Lisboa	Lisboa e Vale do Tejo
Fábrica de Startups	Lisboa	Lisboa e Vale do Tejo
INOVISA	Lisboa	Lisboa e Vale do Tejo
LISPOLIS	Lisboa	Lisboa e Vale do Tejo
Madan Parque	Lisboa	Lisboa e Vale do Tejo
PLAY	Lisboa	Lisboa e Vale do Tejo
Startup Lisboa	Lisboa	Lisboa e Vale do Tejo
Teclabs	Lisboa	Lisboa e Vale do Tejo
Vodafone LABS Lisboa	Lisboa	Lisboa e Vale do Tejo
Taguspark	Oeiras	Lisboa e Vale do Tejo
Idea Atlantico	Braga	Norte
Startup Braga	Braga	Norte
Ave Park	Guimarães	Norte
Spin Park	Guimarães	Norte
Centro de Incubação da Maia	Maia	Norte
TecMaia	Maia	Norte
Centro de Incubação de Matosinhos	Matosinhos	Norte
Incubadora de empresas de Projectos do Quadra	Matosinhos	Norte
Cace Cultural Porto	Porto	Norte
Centro de Incubação do Porto	Porto	Norte
Centro de Incubação Portugal Global	Porto	Norte

INSerralves	Porto	Norte
NET	Porto	Norte
Ninho de Empresas da Fundação da Juventude	Porto	Norte
PortoDigital	Porto	Norte
Spin Logic	Porto	Norte
UPTec	Porto	Norte
Fábrica Santo Thyrso	Santo Tirso	Norte
Centro de Incubação da Trofa	Trofa	Norte
Centro de Incubação de Vizela	Vizela	Norte
Instituto Empresarial do Tâmega	Amarante	Norte
In.cubo	Arcos de Valdevez	Norte
Oficina da Inovação	Braga/Viana do Castelo	Norte
Brigantia EcoPark	Bragança	Norte
inovagaia	Gaia	Norte
tecval	Paços de Ferreira	Norte
Incubadora do Tâmega e Sousa	Penafiel	Norte
Centro de Incubação da Póvoa do Varzim	Póvoa do Varzim	Norte
Régia-Douro Park	Vila Real	Norte
IEMinho	Vila Verde	Norte

07

RESEARCH
PROJECTS

7. Research projects

This chapter lists some relevant research and innovation projects, either recently concluded or ongoing. Details on the BBI JU projects can be found at <https://www.bbi-europe.eu/projects>.

7.1 MultiBiorefinery (ongoing)

Project coordinated by the University of Aveiro, in the Centro region, together with five other research centres. The project is focusing on residues from forest, agriculture and fish industry, with the objective of obtaining polymers and bioactive compounds at pilot scale.⁷⁰

7.2 Bio-ware (ongoing)

Regional project by the Entrepreneurial Association of Santarem and Agrocluster Ribatejo, aiming at increasing awareness of the bioeconomy potential of the Ribatejo district⁷¹.

7.3 Centro Bio (ongoing)

Project coordinated by BLC3. The project consists of the creation of an open-access biotechnology infrastructure exploiting an abandoned industrial area. The project has earned BLC3 a Region Stars award and a Startup Europe award in 2016.⁷²

7.4 Blueandgreen (ongoing)

EU Twinning project coordinated by CIIMAR (Interdisciplinary Centre of Marine and Environmental Research) to boosting scientific excellence and innovation capacity in biorefineries based on marine resources.⁷³

7.5 D-Factory: The Micro Algae Biorefinery (concluded)

EU Collaborative Project, the D-Factory aims to set a world benchmark for a sustainable biorefinery based on biomass from halophilic microalgae. The project aimed to tailor the productivities of *Dunaliella* microalgal strains use the two most advanced systems for cultivating microalgae, including a series of photobioreactors developed by A4F Portugal⁷⁴.

7.6 BIOFAT (concluded)

The Portuguese company A4F built and operated a 3000 m² microalgae experimental plant in Pataias, near Leiria.

⁷⁰ <http://www.poci-competite2020.pt/noticias/detalhe/Proj16403-MultiBiorefinery>

⁷¹ <http://www.nersant.pt/projetos/financiados/bio-ware/>

⁷² <http://www.dn.pt/lusa/interior/projeto-centro-bio-de-oliveira-do-hospital-recebe-mais-uma-distincao-europeia-8552033.html>

⁷³ <http://www.kg2.eurocean.org/proj.jsp?load=305063>

⁷⁴ <http://www.kg2.eurocean.org/proj.jsp?load=302002>

7.7 Biocombus (concluded)

Project coordinated by Universidade de Tras-os-Montes e Alto Douro (UTAD), in the Norte region, together with the local olive oil cooperative.

The project developed a pilot plant for valorisation of olive oil and cork industry residues into solid biomass fuels. The plant started running in 2013 and is patented by UTAD⁷⁵. UTAD is also carrying out a project for conversion of olive, wine and animal residues into biofuels⁷⁶.

7.8 BioCec (concluded)

Project coordinated by Mistolin, a chemical industry producing household cleaning products, together with the University of Coimbra. The project is aiming at developing new, more environmentally friendly formulations of waxes and cleaning products, including bio-based ones.⁷⁷

7.9 BIIPP (concluded)

Project coordinated by Soporcel (now The Navigator company) and implemented chiefly by its research centre RAIZ. The project studied the possibility of producing ethanol from the side streams of a Kraft pulp mill and the extraction of high value added compounds (polyphenols and terpenes) from bark.⁷⁸

7.10 Bioblad (concluded)

Project from the SME CEV, who develop a fungicide extracted from an edible plant, that is non toxic for humans or the environment. The project earned the company a national prize for innovative SMEs.⁷⁹ The product is now on the market in USA under the name PROBLAD PLUS™. It's undergoing authorisation for use in Europe.

7.11 Rose4Pack (concluded)

Project coordinated by Centro de Estudos de Ciência Animal. The project developed a biodegradable food packaging material enriched with active compounds extracted from rosemary.⁸⁰

7.12 POTATOPLASTIC (concluded)

Project coordinated by the plastic industry Isolago⁸¹. The project studied the feasibility of producing food packaging materials and films from starch and residual streams from the potato industry.

⁷⁵ <http://www.utad.pt/vPT/Area2/OutrasUnidades/GAP/Projetos/Paginas/Biocombus.aspx?lst=1>

⁷⁶ <http://www.confagri.pt/Noticias/Pages/noticia64221.aspx>

⁷⁷ http://www.poci-compete2020.pt/pesquisa/detalhe/Proj24791_BioCec

⁷⁸ <http://www.ciceco.ua.pt/index.php?menu=218&tabela=projectosdetail&projectid=313&language=eng>

⁷⁹ <http://www.cev.com.pt/en/about-us/>

⁸⁰ <http://www.poci-compete2020.pt/pesquisa/detalhe/Rose4pack-Investigacao-portuguesa-desenvolve-embalagem-biodegradavel-inovadora>

⁸¹ http://www.ciceco.ua.pt/index.php?menu=255&language=eng&tabela=geral_article&id_article=225

7.13 ABACUS (ongoing)

The BBI JU ABACUS project has been designed to synthesise a range of new molecules, in terpenoids family, from microalgae that will help bring competitive products to the market. A4F AlgaFuel is a partner in the consortium.

7.14 AFTERLIFE (ongoing)

AFTERLIFE (BBI JU project) develops a flexible, cost- and resource-efficient process for recovering and valorising the relevant fractions from wastewater.

NOVA .ID.FCT is a partner in the consortium.

7.15 BIOBRIDGES (ongoing)

BIOBRIDGES, a BBI JU project coordinated by Portuguese Communication GLOBAZ S.A., aims to boost the marketability of bio-based products by establishing close cooperation and partnership between bio-based Industries, brand owners and consumers' representatives.

7.16 BIOWAYS (ongoing)

The BBI JU project BIOWAYS aims to increase public awareness of bio-based products and applications supporting the growth of the European bioeconomy. GLOBAZ S.A. is a partner in the consortium.

7.17 FUNGUSCHAIN (ongoing)

The FUNGUSCHAIN project (BBI JU) aims to extract value from the agricultural offcuts of commercial mushroom farming producing food supplements for the elderly, plastic products and industrial film products such as bags and gloves. Biotrend S.A. is a partner in the consortium.

7.18 LIBBIO (ongoing)

Instituto Superior de Agronomia, Universidade de Lisboa and LUSOSEM Produtos para Agricultura S.A. are partners in the BBI JU project LIBBIO, which uses Andean lupin (*Lupinus mutabilis*) for increased biomass from marginal lands and value for BIOrefineries.

7.19 MAGNIFICENT (ongoing)

Necton - Companhia Portuguesa de Culturas Marinhas SA, Cmp - Cimentos Maceira E Pataias SA, Sparos LDA and Madebiotech - C R & D, S.A. Zona Franca da Madeira are partners in the BBI JU project MAGNIFICENT which seeks to develop a new value chain for food, aquafeed and cosmetic ingredients based on microalgae.

7.20 PROVIDES (ongoing)

BBI JU project PROVIDES will develop a new, sustainable and techno-economically feasible pulping technology for wood and agro-based lignocelluloses, using a new class of solvents, known as deep eutectic solvents (DES), The Navigator Company, Celulose Beira Industrial SA and Universidade de Aveiro are partners in the consortium.

7.21 ReInvent (ongoing)

The ReInvent project (BBI JU) aims to deliver novel bio based rigid moulded and spraying insulation foam systems for the construction industry and novel bio based soft and semi-rigid foams for the automotive industry. Centitvc - Centro de Nanotecnologia e Materiais Tecnicos Funcionais e Inteligentes Associacao is a partner in the consortium.

7.22 SUSBIND (ongoing)

The BBI JU SUSBIND project aims to successfully produce and test bio-based binders as alternative to fossil-based binders. Valbopan - Fibras De Madeira SA is a partner in the consortium.

7.23 WoodZymes (ongoing)

BBI JU project WoodZymes seeks to develop extremozymes (enzymes that can function under extreme environments) and extremozyme-based processes that will allow underutilised lignin and hemicellulose fractions of kraft pulp mills to be valorised. Instituto de Investigação da Floresta e Papel - RAIZ and The Navigator Company SA are partners in the consortium.

7.24 Bioblocks (concluded)

Project coordinated by Soporcel (now The Navigator company), aiming at integrated valorisation of residues and side streams from the pulp and paper process, into products such as biofuels, chemicals and polymers.⁸²

7.25 NMC – Novos Materiais Celulósicos (concluded)

Project coordinated by Portucel (now The Navigator company), studying micro or nanofibrillated cellulose.⁸³

⁸² <http://www.Ineg.pt/iedt/projectos/499/>

⁸³ <http://www.pofc.qren.pt/Media/Noticias/entity/NMC--Novos-Materiais-Celulosicos>

08

**MARKET
ACTORS: BRAND
OWNERS and
CONSUMER
GROUPS**

8. Market actors: brand owners and consumer groups

8.1 Brand owners

Portugal is home to national branches of most of the global brands. Besides them, some notable local big brands exist. The table below shows the most recognised brands in Portugal according to the annual market studies by Brand Finance. In particular, the classifications of the last five years were taken into account, excluding sectors not relevant for the scope of this document (e.g. TLC).

Table 8.1: Major brand owners of Portugal (adapted from⁸⁴)

Company	Sector	Description
Central de Cervejas	Food & beverage	Brewery. It owns approximately 45% of the Portuguese beer market. 100% owned by Heineken
Unicer	Food & beverage	Brewery. It owns approximately 45% of the Portuguese beer market. Partially owned by Carlsberg (44% share)
Delta Cafés	Food & beverage	Coffee
Lactogal	Food & beverage	Food, dairy
Ramirez	Food & beverage	Fish
Nutrinveste	Food & beverage	Olive and seed oils
Sovena	Food & beverage	Olive and seed oils
Sumol + Compal	Food & beverage	Food and beverage, merger of Sumolis and Compal
Renova	Pulp & paper	Mass consumption products: wipes and hygiene products
The Navigator Company	Pulp & paper	Merger of Portucel and Soporcel. Mass consumption product: office paper
SONAE	Retail	Chain of supermarkets and malls
Grupo Jeronimo Martins	Retail	Chain of supermarkets and malls
EDP	Energy and fuels	
GALP	Energy and fuels	

⁸⁴ Brand Finance's Top Portuguese Brands Table 2012 - 2016

8.2 Consumer groups

Portal do Consumidor⁸⁵ (consumer's portal) is the government's initiative for protecting consumers' rights.

Several consumers' associations exist:

- ACOP - Associação de Consumidores de Portugal⁸⁶;
- APDC - Associação Portuguesa de Direito do Consumo⁸⁷;
- UGC - União Geral de Consumidores⁸⁸;
- DECO - Associação Portuguesa para a Defesa do Consumidor⁸⁹

The Azores have their own associations:

- ACRA - Associação dos Consumidores da Região dos Açores⁹⁰

Municipalities usually also offer a consumer defence service either under the form of a "Centro de Informação Autárquico ao Consumidor" or of a "Gabinete de Apoio ao Consumidor".

85 <https://www.consumidor.pt/>

86 <http://acop.planetaclix.pt/>

87 www.apdconsumo.pt

88 <http://ugc.pt>

89 <https://www.deco.proteste.pt/>

90 www.acra.pt

09



CONCLUSIONS

9. Conclusions

Portugal represents a Country with a high but so far only partially exploited bio-based potential. Despite the difficulty of data gathering on the current levels, the amount of bio-based residues generated in key sectors of the Portuguese economy like agriculture, farming, fishing and forest would be enough to justify the deployment of full scale biorefineries.

An obstacle to realise this vision is the small scale of the majority of producers and the fragmented geographic landscape. Another challenge is the lack of a national bioeconomy strategy supporting a wider uptake of bioeconomy and circular economy actions.

BLUEBIO ALLIANCE ⁹¹, a non-profit association representing all players in the marine bioresources and blue biotech value chain, together with Calouste Gulbenkian Foundation and Oceano Azul foundation, organized a large scale debate on the “Roadmap to Blue Bioeconomy” in Portugal, that can easily be adapted to promote the general bioeconomy and biorefineries as the basepoints are very similar.

Main actions are needed in 4 areas:

- **Network and capacity building:** Bioeconomy is a multidisciplinary sector that needs to be built on networks and multi know how. Portugal has many small and isolated stakeholders that are not fully integrated into the value chain and not well connected with other stakeholders. Actions that promote networking, mapping of stakeholders and their offer/services, etc. are very much needed and engaging the more traditional sectors is crucial.
- **Innovation & entrepreneurship:** The base of the bioeconomy is settled on traditional sectors and in Portugal most of these players are not innovative. However, the situation is changing and there is a clear need and willingness to promote innovation and entrepreneurship in green and blue sectors that can feed novel products bio-based to the end user industries. Furthermore, the number of small startups in these sectors is growing and support actions to foster these are much needed. Technology transfer and open innovation measures are also crucial to foster the bioeconomy in Portugal.
- **Public awareness:** Like in the EU, and even more in Portugal, public awareness about the advantages of bio-based products and economy is low and/or the added value is not fully perceived. Therefore campaigns for awareness and communication are much needed to foster consumption and trends for bio-based products.
- **Access to finance/public funding:** The bioeconomy stakeholders are small businesses with difficulty to scale up. Due to the lack of access to private finance public funding dedicated to these sectors is needed.

⁹¹ <http://www.bluebioalliance.po>

10

**APPENDIX A:
MEMBERS OF
NATIONAL
INDUSTRY
CLUSTERS**

Appendix A: Members of National Industry Clusters

10.1 Portugal Foods

Company	Website
A. J. Bem, Lda.	www.ajbem.pt
A. Pires Lourenço & Filhos S.A.	www.apireslourenco.pt
ADRAVE-Agência para Desenvolvimento Regional do Vale do Ave	www.adrave.pt
Advanced Products Portugal, Lda	www.ap-portugal.com
AGP Meat	
AgroAguiar - Agroindústria S.A.	www.agroaguiar.pt
Amendouro-Comércio e Industria de Frutos Secos S.A.	www.amendouro.com
APCER Associação Portuguesa de Certificação	www.apcergroup.com
Apisland, Unipessoal, Lda	www.apisland.pt
Aveleda S.A.	www.aveleda.pt
Azcôa - Azeites do Côa Lda	www.jccoimbra.com
BFruit S.A.	www.bfruit.pt
Bicafé - Torrefação e Comércio de Café, Lda	www.bicafecapsulas.com
Biocaracol	www.biocaracol.com.pt
(Paulo & Isabel Fragoso, Lda.)	
Bioinvitro Biotecnologia, Lda	www.bioinvitro.com
Bísaro - Salsicharia Tradicional, Lda.	www.bisaro.pt
Bivalvia - Mariscos da Formosa, Lda.	www.bivalvia.pt
Blue Line - Estratégias de Gestão e Marketing Unipessoal, Lda.	www.blueline.pt
Bôfumeiro, Lda	www.bofumeiro.pt
Buggypower	www.buggypower.eu
Cantinho das Aromáticas, Lda.	www.cantinhodasaromaticas.pt
Carnes Landeiro, S.A.	www.carneslandeiro.pt
Carnes Meireles do Minho, S.A.	www.carnesmeireles.pt
Prisca Alimentação S.A.	www.casadaprisca.com
Casa de Encosturas	www.casadeencosturas.com
Casa de Penalva (Nuno Azeredo Unipessoal,Lda.)	www.casadepenvalva.com
Grupo Cecílio	www.cecilio.pt
Cerealis Produtos Alimentares S.A.	www.cerealis.pt
CISTER-Industria Produtos Alimentares Lda.	www.raimundomaia.com
COFISA - Conversas de Peixe da Figueira S.A.	www.cofisa.pt
Comifrio - Produtos Pré-Cozinhados, S.A.	www.comifrio.com

Comtemp - Companhia dos Temperos, Lda.	www.comtemp.com.pt
Condi Alimentar S.A.	www.condi.pt
Confeitaria Alvorada (Alberto Fernandes e Filhos Lda)	www.confeitariaalvorada.com.pt
Confeitaria Vale, Lda	www.confeitaria-vale.com
Conservas Pinhais - Pinhais e Cª, Lda.	www.pinhais.pt
Conservas Portugal Norte, Lda.	www.portugalnorte.com
Conserveira do Sul, S.A.	www.consul.pt
Cyspresso	www.cyspresso.com
DanCake Portugal S.A.	www.dancake.pt
Decorgel Produtos Alimentares Unipessoal, Lda.	www.decorgel.pt
Delicias do Tojal	www.deliciasdotojal.com
Delta Cafés	www.delta-cafes.pt
Derovo Derivados de Ovos S.A.	www.ddo-ovoprodutos.com
Docapesca - Portos e Lotas, S.A.	www.docapesca.pt
Doctor Gummy Europe S.A.	www.doctorgummy.com
Dominant Slice	www.bitcheese.pt
Douromel- Fábrica de Confeitaria, Lda.	www.douromel.com
Du Bois De La Roche (Portugal)- Agro-Alimentar, Lda.	www.duboisdelaroche.pt
Ernesto Morgado S.A.	www.patoreal.pt
ELIPEC S.A.	www.elipec.pt
Fábrica de Conservas "A Poveira" S.A.	www.apoveira.pt
Fábrica de Conservas La Gondola Lda	www.conservaslagondola.pt
Fabridoce	www.fabridoce.pt
Ferbar - Produtos Alimentares, Lda.	www.ferbar.com
Ferraz & Ferreira	www.ferrazferreira.com.pt
Fórmula da Avó, Lda - Egglicious	www.egglicious.pt
Food Go - Import Export	
Framboesóparty, Lda	
Fromageries Bel Portugal S.A.	www.belportugal.pt
Frueat - Produtos Alimentares, Lda.	www.fruut.pt
FRULACT - SGPS S.A.	www.frulact.pt
Frutóbidos Licores e Transformação de Frutas, Lda.	www.frutobidos.pt
Gelcampo-Ultracongelados S.A.	www.gelcampo.com
Gelpeixe-Alimentos Congelados S.A.	www.gelpeixe.pt
Germen - Moagem de Cereais S.A.	www.germoagem.pt
PRIMOR – Charcutaria Prima S.A.	www.primor.pt
H. Seabra - Frio Industrial, S.A.	www.hseabra.seabraglobal.com

Hands on Earth, Lda.	www.handsonearth.com.pt
Herdade da Madeira Velha Agro-Alimentar, Lda.	www.herdadedamadeiravelha.com
HotNuts Original (Lider Partner, Lda.)	www.hotnutsoriginal.com
IEQUALTECS, Lda.	www.iequaltecs.pt
Imperial-Produtos alimentares S.A.	www.imperial.pt
Indulac - Indústrias Lácteas, S.A.	www.indulac.pt
Inpired By Lemon	www.inspiredbylemon.com
Lacticínios das Marinhas Lda	www.lmarinhas.pt
Lacticínios MAF, Lda	www.lactimaf.com
Licóbidos	www.licobidos.com
Lactilouro, Lda	www.domvillas.pt
LIPORFIR - Produtos Alimentares, S.A.	www.liporfir.pt
Lusiteca - Produtos Alimentares, S.A.	www.lusiteca.pt
Maçarico S.A.	www.macarico.com
Mais Ervas	www.maiservas.com
(TouchFlowers)	
Manuel Serra S.A.	www.serrata.pt
Maxiprimus, Lda.	www.maxiprimus.pt
Mendes Gonçalves S.A.	www.mendesgoncalves.pt
Miguel e Miguel	www.miguelemiguel.pt
Minhofumeiro Enchidos e Fumados à Moda de Ponte de Lima, Lda.	www.minhofumeiro.pt
Mistolin S.A.	www.mistolin.pt
Monte D'Alva Alimentação S.A.	www.montalva.pt
Movelife	www.movelife.net
Nata Pura	www.natapura.com
(Black & Yellow, Lda.)	
Novarroz - Produtos Alimentares S.A.	www.novarroz.pt
Nutre - Indústrias Alimentares S.A.	www.shoyce.pt
Nutricafés S.A.	www.nutricafes.pt
Nutrigreen S.A.	www.nutrigreen.pt
Oliveiras Gold Portugal, Lda	www.oliveirasgoldportugal.pt
Olivais do Sul - Soc. Agro-pecuária, Lda	www.olivaisdosul.com
Organic Nature - Forest Organic Products Unipessoal, Lda	www.organicnature.eu
Palmeiro Foods S.A.	www.palmeirofoods.pt
Panicongelados - Massas Congeladas, S.A.	www.panidor.pt
Panificadora Marques Filipe, Indústria de Panificação, Lda.	www.marquesfilipe.com
Panilima Padaria e Pastelaria Lda	www.panilima.pt

Panike - Industria de Produtos Alimentares Ultracongelados S.A.	www.panike.pt
Papaolive	www.papaolive.com
Pascoal & Filhos S.A.	www.pascoal.pt
Pastelnor - Industria e Inovação Alimentar Lda.	www.pastelnor.com
Plásticos Futura, Lda.	www.plasticos-futura.com
PEC Nordeste - Indústria de Produtos Pecuários do Norte, S.A.	www.pecnordeste.pt
Porto Union, Lda.	www.portounion.com
Porttable - Produtos Alimentares Lda.	www.porttable.pt
PrimeGoods - Produtos Alimentares de Excelência, Lda.	www.primegoods.pt
Prodigious Mountain, Lda.	www.prodigious-mountain.com
PROSA, Produtos e Serviços Agrícolas S.A.	www.prosa.pt
Quantum P&G, Lda. (Likoris & Aromatikus)	www.quantum.com.pt
Queijaria Guilherme	www.queijariaguilherme.com
Queijos Lagos - Queijos e Derivados Lda.	www.queijoslagos.com
Queijos Tavares, S.A.	www.queijostavares.pt
Quinta da Pacheca, Soc. Agrícola e Turística, Lda	www.quintadapacheca.com
Quinta de Religiões	www.quintadereligaes.com
Quinta dos Ingleses	www.quintadosinglesees.com
Quinta dos Jugais Lda.	www.jugais.com
Ramirez & CA (Filhos) S.A.	www.ramirez.pt
RAR – Holding SGPS	www.rar.com
RAR – Refinarias de Açúcar Reunidas S.A.	www.rar.com
RealSabor	www.realsabor.pt
(Alfredo da Silva Barbosa)	
Rialto	www.rialto.pt
Rogério Leal & Filhos S.A.	www.rogerioleal.pt
Sabores do Vez - Fumeiro Tradicional, Lda.	www.saboresdovez.com
Salsicharia do Alto Paiva (Fumeiros Terras do Demo)	www.fumeirosterrasdodemo.pt
Senras Dairy	www.queijosenras.com
Sense Test- Sociedade de Estudos de Análise Sensorial a Produtos Alimentares Lda.	www.sensetest.pt
Sociedade Agrícola do Conde, Unipessoal Lda.	www.quintavaledoconde.pt
Sociedade Água de Monchique S.A.	www.aguamonchique.pt
Sovena	www.sovenagroup.com
Sunlover, S.A.	www.drinksunlover.com
SUTOL - Indústrias Alimentares, Lda.	www.sutol.pt
Tété II - Produtos Lácteos, Lda	www.tete.pt
UNICER Bebidas S.A.	www.unicer.pt

Vale da Veiga - Sociedade Agrícola, Lda	www.valedaveiga.com
Valente Marques	www.cacarola.pt
Vários Sabores	www.variossabores.com
VHumana S.A.	www.vhumana.pt
Vida Sadia, Unipessoal, Lda.	www.vidasadia.pt
Vieira de Castro - Produtos Alimentares S.A.	www.vieiradecastro.com
Vizelpas-Comércio de Artigos Plásticos, Lda.	www.vizelpas.pt
Xarão - Companhia Portuguesa de Licores, Lda.	www.xarao.pt

10.2 InovCluster

Company	Sector
Queijaria Almeida - Indústria e Comércio de Queijo Lda	Dairy
Soalheiralves	Dairy
Queijaria da Licínia	Dairy
Sabores da Soalheira	Dairy
Queijaria Artesanal do Ilídio	Dairy
Queijaria da Solaheira	Dairy
Adriana Pires dos Santos	Dairy
Tapada das Sortes	Dairy
Braz e Irmão	Dairy
Beiralacte	Dairy
Danone	Dairy
Herdade do Escrivão	Dairy
Vhumana	Dairy
Queijaria Artesanal Lourenço & Filhos	Dairy
Damar	Dairy
logarte	Dairy
Henrique Santiago	Dairy
Malpiqueijo	Dairy
Sabores da Idanha - Cooperativa de Produtores de Queijos da Beira Baixa	Dairy
Monforqueijo - Produtores de Queijo de Ovelha e Cabra de Monforte	Dairy
Queijos Tavares	Dairy
Monte Pedra da Légua	Dairy
BRIOSIA CONSERVAS PESCADO LDA	Fish
A Poveira	Fish
Liporfir	Fish
Lugrade	Fish
Salsicharia da Gardunha	Meat
ICT- Indústria de Carnes do Tejo, Lda	Meat
Snailsicó, Unipessoal, Lda	Meat
BôFumeiro	Meat
Quinta dos Fumeiros	Meat

Serra DALva	Meat
Cevadas	Meat
Fumeiros da Guarda	Meat
Casel	Meat
Casa da Prisca	Meat
A. Pires Lourenço	Meat
AcripinhalSalsibeira	Meat
Manuel Rodrigues e Herdeiros	Meat
Porttable	Olive
Fio da Beira	Olive
Quinta Pires Marques	Olive
COOPAGROL - Cooperativa Agrícola dos Olivicultores do Ladoeiro	Olive
Albiazeites	Olive
Probeira	Olive
APABI	Olive
Rodoliv	Olive
Maçarico	Olive
Cooperativa Agrícola dos Olivicultores do Fundão	Olive
Bolachinhas de Sousel	Cereals
Panisubtil Lda.	Cereals
Confeitaria e Pastelaria Moura	Cereals
Brieftime - Portugal Food Makers	Cereals
Amor de Biscoito	Cereals
Bolos Dayana	Cereals
Padaria Canelas e Coelho	Cereals
Padaria do Salgueiro	Cereals
Fábricas Lusitana	Cereals
Beira Salgados	Cereals
Iguaria de Shiitake	Fruit and vegetables
Nutrigreen	Fruit and vegetables
Casa do Vale Flavours	Fruit and vegetables
Gumelo Lda.	Fruit and vegetables
Tânia & Sónia Jorge Martins, Lda.	Fruit and vegetables
Guarda21	Fruit and vegetables
Caverna dos Cogumelos	Fruit and vegetables
Bio Beirão	Fruit and vegetables
My Land	Fruit and vegetables
Aromas do Valado	Fruit and vegetables
Figo DIdanha	Fruit and vegetables
Hortas DIdanha	Fruit and vegetables
Quinta Vale da Horta	Fruit and vegetables
Biofun - Produtos Biológicos do Fundão	Fruit and vegetables
Quinta do Aboíz	Fruit and vegetables
Doces Saberes	Fruit and vegetables
Ervas da Zoé	Fruit and vegetables
Gardunha	Fruit and vegetables

AgroFrutas Almério	Fruit and vegetables
AAPIM	Fruit and vegetables
Berrysmart	Fruit and vegetables
Beira Baga	Fruit and vegetables
Aaditya International	Fruit and vegetables
Caves Campelo, S.A.	Wine
Tiguimar	Wine
Licóbidos	Wine
Emcodouro	Wine
Horta de Gonçalpares	Wine
Quinta dos Roques	Wine
Quinta da Arrancada	Wine
Quinta dos Termos	Wine
Comissão Vitivinícola Regional da Beira Interior	Wine
Dão Sul	Wine
Adega Cooperativa de Cantanhede A	Wine
dega do Alto Tejo	Wine
Adega Cooperativa da Covilhã	Wine
SILVAPI	Honey
Sabores do Palanque	Honey
Meltagus	Honey
Claro's Apicultura	Honey
Low Edge Consult	Services
SKY4YOU	Services
Horto Mondego	Services
Nutrisequal	Services
Expertevasion, Lda	Services
Solevol HRV - Equipamentos de Processos, SA	Services
Maxiprimus, Lda.	Services
CCACP- Centro Comercial e Agrícola do Canal Profissional, S.A.	Services
FoodInTech	Services
Beira-gado	Services
ADSI	Services
Cipriagro	Services
Electroalbi	Services
DF transportes	Services
Beira Tradição	Services
Frio90	Services
Appizêzere	Services
Albigel	Services
Oficina do Paladar	Services
Bio Espaço	Services
Coviserra	Services
Sinmetro	Services
Groupe Olano	Services
Amo Produto Local	Services

Alpalina	Services
Grupo RTM	Services
Maria Dias	Services
Rotas do Lince	Services
Albisabores - Importação e Exportação de Produtos Alimentares, Lda.	Services
Miranda e Serra	Services
Terras da Beira Baixa - Sociedade de Desenvolvimento Agro-Industria de Castelo Branco Santos e Marçal	Services
TEU Transitário	Services

10.3 Agrocluster

Company	Sector
Almojanda	Olive oil
AZEITE JUNCAL	Olive oil
Comtemp	Olive oil
Diterra - Comércio Agro-Industrial, Lda.	Olive oil
Fio Dourado - Transformação e Comercialização Produtos Olivícolas, Lda.	Olive oil
Gallo	Olive oil
Jerónimo Pedro Mendonça de Abreu e Lima	Olive oil
Mendes Gonçalves, S.A.	Olive oil
Quinta do Coro	Olive oil
SAOV - Sociedade Agrícola Ouro Vegetal, Lda.	Olive oil
Sociedade Agrícola do Vale de Umbria, S.A.	Olive oil
Sociedade Agro-alimentar da Mascata, Lda.	Olive oil
Unique Portuguese Taste, Lda.	Olive oil
Victor Guedes, S.A.	Olive oil
Vineves	Olive oil
ZeBairrao	Olive oil
Casal da Coelheira - Sociedade Agrícola, LTD.	Wine and beverages
DFJ Vinhos, S.A.	Wine and beverages
Dinâmicas Rotinas, Lda.	Wine and beverages
Divinis, S.A.	Wine and beverages
Festivo Começo, S.A.	Wine and beverages
Quinta do Arrobe, Unipessoal Lda.	Wine and beverages
Quinta do Vale da Lousa, S.A.	Wine and beverages
SIVAC, S.A.	Wine and beverages
Quinta do Coro	Wine and beverages
Sociedade Agro-alimentar da Mascata, Lda.	Wine and beverages
Sociedade Lusitana de Destilação S.A.	Wine and beverages
Sumol + Compal Marcas, S.A.	Wine and beverages
Vineves	Wine and beverages
Dinâmicas Rotinas, Lda.	Meat and cheese
Henricarnes, Lda.	Meat and cheese
Jacinto Pimentel Rego & C.ª, Lda.	Meat and cheese
Lacticínios do Paiva, S.A.	Meat and cheese
Margarido & Margarido, Lda.	Meat and cheese
Monte D'Alva Alimentação, S.A.	Meat and cheese
Nobre Alimentação, S.A.	Meat and cheese
Paladares Alentejanos, Lda.	Meat and cheese
Probaixa - Produção de Presuntos da Beira Baixa, Lda.	Meat and cheese

Servipal, Lda.	Meat and cheese
Sicarze, S.A.	Meat and cheese
IFQ – International Food Quality, Lda.	Canned and frozen food
Monliz – Produtos Alimentares do Mondego e Liz, S.A.	Canned and frozen food
Monte D’Alva Alimentação, S.A.	Canned and frozen food
Nutriva Produção e Distribuição Alimentar, Lda.	Canned and frozen food
Nobre Alimentação, S.A.	Canned and frozen food
Socival, Comércio e Indústria Alimentar, Lda.	Canned and frozen food
Agro-Dotti – Fornecimento de Produtos e Serviços Agrícolas, Lda.	Fruit and vegetables
Agro-Graça, Produção e Comercialização de Produtos Agrícolas, Lda	Fruit and vegetables
Agromais – Entrepasto Comercial Agrícola, CRL.	Fruit and vegetables
BACEFRUT, Lda.	Fruit and vegetables
Bonduelle (Portugal) Agroindústria, S.A.	Fruit and vegetables
Cooperfrutas – Cooperativa de Produtores Fruta e Produtores Hortícolas de Alcobaça, CRL	Fruit and vegetables
Naturalcrop, Unipessoal, Lda.	Fruit and vegetables
Protecnatur, Exploração Agrícola, Lda.	Fruit and vegetables
Rosagro – Sociedade Agrícola, Lda.	Fruit and vegetables
Sociedade Agrícola da Quinta do Meirinho, Lda.	Fruit and vegetables
Sumol+Compal	Fruit and vegetables
Agrolex II – Rações, Lda.	Feed
Diamantino Coelho & Filho, S.A.	Feed
Maxipet, Lda.	Feed
Rações Zêzere, S.A.	Feed

10.4 Portugal Fresh

Company	Sector
AbrunhOeste	Fruit
AgroAguiar	Agro
Agromais	Agro
Alcitrus	Fruit
ADL	Agro
AHSA	Agro
Associação de Produtores de Maça de Alcobaça	Fruit
Associação de Produtores de Opuntias Portugal	Fruit
Associação interprofissional de hotricultura do Oeste	Agro
ANP	Agro
Leader Oeste	Agro
APK	Agro
APPP-FN	Agro
ARUCI Frutas	Fruit
Beirabaga	Fruit
Bfruit	Fruit
Bioterris	Agro
Bionomia	Agro
Calcob	Agro
Campotec	Agro
Central frutas Painho	Fruit
COTHN	Agro
Cerfundao	Agro
COFRAL	Agro

Cooperativa agricola de Mangualde	Agro
Cooperativa agricola do Tavora	Agro
Cooperfrutos	Fruit
Coopval	Agro
COPA	Agro
Dialogos do bosque	Fruit
Ecofrutas	Fruit
Emergosol	Agro
Extrafrutas	Fruit
Frutalvor	Fruit
Classe frutas	Fruit
Frutas Martinho	Fruit
FNOP	Fruit
Fruti Taipina	Fruit
Fresh fresh Portugal	Fruit
FRUPOR	Fruit
Frusantos	Fruit
Frutalmente	Fruit
Frutoeste	Fruit
Global fruit	Fruit
Granfer	Agro
Hortafina	Agro
Hortaiberica	Agro
Hortapronta	Agro
Heartpotato	Agro
HCA	Agro
Hortomelao	Fruit
INOVFOOD	Agro
Kiwicoop	Fruit
Kiwi Green Sun	Fruit
Luis Vicente	Agro
Luis Sabbo	Agro
Luso Morango	Fruit
Luso Pera	Fruit
Loveberry	Fruit
Mais k perfeito	Agro
Manuel Duarte da Cruz	Agro
Monte dos Inglesinhos	Agro
Moranguito	Fruit
NARC frutas	Fruit
Nutrigreen	Agro
NUVI fruits	Fruit
Organic nature	Agro
PMNI	Agro
Pomares do sul	Fruit
Primofruta	Fruit
Pine flavour	Fruit
Quinta de Lamacais	Agro
Quinta do Pizao	Agro
Quinta da Porta	Agro
SOREGI	Agro
Sudoberry	Fruit
Santos & Pereira	Agro
SOMA	Agro

Torriba	Agro
Triportugal	Agro
Teciplante	Agro
Terras de Felgueiras	Agro
Ucanorte	Agro
Vitacress	Agro
Vale da Rosa	Agro
ZimbrAlecrim	Agro

10.5 Fórum Oceano⁹²

A4TEC – Association for the Advancement of Tissue Engineering and Cell Based Technologies & Therapies (3B's Research Group, Univ. Minho)

ABB (Asea Brown Boveri) S.A.

ADAPI - Associação dos Armadores das Pescas Industriais

AEP – Associação Empresarial de Portugal

AFM – ASSOCIAÇÃO FÓRUM MARCENTRO

Agência DNA Cascais – Cascais, um Concelho Empreendedor

Águas do Porto: CMPEA – Empresa de Águas do Município do Porto, EM

Ahlers Lindley, Lda.

AIB – Associação dos Industriais do Bacalhau

AIN – Associação das Indústrias Navais

ALGAPLUS – Produção e Comercialização de Algas e seus Derivados, LDA.

ALMADESIGN - Conceito e Desenvolvimento de Design, Lda.

AMAL - Module Yard, S.A.

ANICP - Associação Nacional dos Industriais de Conservas de Peixe

APDL, S.A. – Administração dos Portos do Douro, Leixões e Viana do Castelo, S.A.,

APL - Administração do Porto de Lisboa, S.A.

APS – Administração dos Portos de Sines e do Algarve, S.A.

⁹² Update September 2018 Source: <http://www.forumoceano.pt/p50-members-list-en>

APSS - Administração dos Portos de Setúbal e Sesimbra, SA

Arqpais – Consultores de Arquitectura Paisagista e Ambiente, Lda

Arsenal do Alfeite, SA

Associação Turismo de Lisboa, Visitors & Convention Bureau

BBA - Associação Nacional para os Biorecursos Marinhos e Biotecnologia Azul BRUNSWICK MARINE – EMEA Operations, LDA

CGD – CAIXA GERAL DE DEPÓSITOS, SA

Câmara Municipal de Matosinhos

Carlos de Sousa e Brito, Isabel Marinho, Mafalda Rodrigues Fonseca & Associados

CCMAR - Centro de Ciências do Mar do Algarve

Chapel 15 Advisors, Lda.

CIRA – Comunidade Intermunicipal da Região de Aveiro

CIIMAR – Centro Interdisciplinar de Investigação Marinha e Ambiental

COFAC, CRL – Universidade Lusófona do Porto

Cooperativa Produtores Peixe Centro Litoral CRL

CPA – Comunidade Portuária de Aveiro (APA – Administração do Porto de Aveiro)

CPF - Comunidade Portuária da Figueira da Foz

DOCAPESCA, PORTOS E LOTAS, S.A.

DouroAzul - Sociedade Marítimo-Turística, S. A.

ENONDAS – ENERGIA DAS ONDAS, S.A.

ESB-UCP – Escola Superior de Biotecnologia da Universidade Católica do Porto

Escola Superior Náutica Infante D. Henrique

ESRI Portugal - Sistemas e Informação Geográfica, S.A.

ETERMAR - Engenharia e Construção, SA

Faculdade de Ciências Sociais e Humanas da Universidade Nova de Lisboa

Foodintech, Lda

Forum Blue School

Fundação da Faculdade de Ciências da Universidade de Lisboa

Galp Energia, SGPS, S.A.

Gelpeixe - Alimentos Congelados, S.A.

GLINTT, INOV, S.A.

Grupo Bensaúde - Bensaúde Marítima, SGPS

Grupo Euronete (Holding) SGPS S.A.

Grupo MCA Construções - M. Couto Alves, S.A.

IDCEM – INSTITUTO PARA O DESENVOLVIMENTO DO CONHECIMENTO E ECONOMIA DO MAR

IMAR – Centro do Mar e Ambiente (Univ. de Coimbra)

Inclusive Sailing, Lda.

INEGI – Instituto de Ciência e Inovação em Engenharia Mecânica e Engenharia Industrial

INESC TEC – Instituto de Engenharia de Sistemas e Computadores, Tecnologia e Ciência

Inova+

INOVA-RIA - Associação de Empresas para uma Rede de Inovação em Aveiro

IPL – Instituto Politécnico de Leiria (ESTM - IPL, Escola Superior de Turismo e Tecnologia do Mar de Peniche)

IPVC – Instituto Politécnico de Viana do Castelo

ISCIA – Instituto Superior de Ciências da Informação e da Administração (FEDRAVE)

ISEP – Instituto Superior de Engenharia do Porto

Lisnave – Estaleiros Navais, S.A.

Lusitânia, Companhia de Seguros, S.A. (LusitaniaMar)

Maralgarve – PLATAFORMA MAR DO ALGARVE – Associação para a dinamização do conhecimento e da economia do Mar do Algarve

MARE - Centro de Ciências do Mar e do Ambiente (Fundação da Faculdade de Ciências da Universidade de Lisboa)

MBA - Consultores Interdisciplinares de Gestão, Lda.

Momento Linear, Consultores, S.A.

MSC - Mediterranean Shipping Company (Portugal) S.A.

Msc Cruzeiros, S.A.

MULTISUB, S.A.

Mútua dos Pescadores – Mútua de Seguros, CRL

NAUTIBER –Estaleiros Navais do Guadiana, Lda.

NavalRocha, S.A.

Novadelta, S.A.

Oceanário de Lisboa S.A.

OESTE CIM – Comunidade Intermunicipal do Oeste

Orey Capital Partners, GP, S.à.r.l

Partex Services Portugal, S.A.

PASCOAL E FILHOS, S.A.

Pinto Basto SGPS

Press Forum – Comunicação Social, S.A.

PSA Sines - Terminais de Contentores, S.A.

PWC – PRICEWATERHOUSECOOPERS & ASSOCIADOS, SROC

Quasar Human Capital

Ramirez & C^a (Filhos) S.A.

RINAVE - Registro Internacional Naval, S.A.

S.D.M. - Sociedade de Desenvolvimento da Madeira, S.A.

SaeR – Sociedade de Avaliação de Empresas e Risco, Lda.

Siemens, S.A.

SOJA DE PORTUGAL – Sociedade Gestora de Participações Sociais, S.A.

SVITZER Lisboa S.A.

Tekever – Tecnologias de Informação, S.A.

The Navigator Company

(antiga Portucel - Empresa Produtora de Pasta e Papel, SA)

Transinsular - Transportes Marítimos Insulares, S.A.

Transtejo – Transportes Tejo, S.A.

Triede TTi - Sistemas de Gestão, Lda.

Turismo Centro de Portugal

UA – Universidade de Aveiro

UC – Universidade de Coimbra (GATS)

UP – UNIVERSIDADE DO PORTO

UPTEC - Associação de Transferência de Tecnologia da Asprela

VdA – Vieira de Almeida & Associados, Sociedade de Advogados, R.L.

Wärtsilä Portugal, S.A.

WavEC, Offshore Renewables

WW – Consultores de Hidráulica e Obras Marítimas S.A.

RINAVE - Registro Internacional Naval, S.A.

S.D.M. - Sociedade de Desenvolvimento da Madeira, S.A.

SaeR – Sociedade de Avaliação de Empresas e Risco, Lda.

SeaExpert – Serviços e Consultoria na área das Pescas, Lda.

SETH – Sociedade de Empreitadas e Trabalhos Hidráulicos, S.A.

Sezim Projectos Educativos, Lda.

Shift Thinkers, Lda.

Siemens, S.A.

SIMBIENTE – Engenharia e Gestão Ambiental, Lda.

Sociedade Central de Cervejas e Bebidas, S.A.

Sociedade Rebelo de Sousa & Advogados Associados, RL

SOJA DE PORTUGAL – Sociedade Gestora de Participações Sociais, S.A.

STEMMATTERS – Biotecnologia e Medicina Regenerativa, LDA.

SVITZER Lisboa S.A.

Tekever – Tecnologias de Informação, S.A.

TERTIR, Concessões Portuárias, SGPS, S.A.

TESTA & CUNHAS, S.A.

Transinsular - Transportes Marítimos Insulares, S.A.

Transtejo – Transportes Tejo, S.A.

UA – Universidade de Aveiro

UC – Universidade de Coimbra (GATS)

UP – UNIVERSIDADE DO PORTO

Uppartner Comunicação de Marketing, S.A.

UPTEC - Associação de Transferência de Tecnologia da Asprela

VdA – Vieira de Almeida & Associados, Sociedade de Advogados, R.L.

WavEC, Offshore Renewables

WW – Consultores de Hidráulica e Obras Marítimas S.A.

ZODPORT – Equipamentos, Assistência e Engenharia, S.A.

10.6 Centro Habitat⁹³

Adelino Duarte da Mata	FAF produtos siderurgicos	Secil
Adla	Foamglas building	SGS
Agui Moveis	G&O Gestao de Obras	Signiumum
Aleluia Ceramicas	Gestluz	Sika
AMORIM cork composites	Gyptec iberica	Silva ventura
AMORIM isolamentos	Hoegrid	Sinergeo
AMORIM revestimentos	Imc	Sinuta
AMPF	Confidencial imobiliario	Sinuta4sun
Antero	Imperria	Smartwatt
Argex	Inova	SN Seixal
Argibeta	IPA	Saores da costa
Artebel	Metalogalva	Socimor casal
Astrolabio	JPC	Sofalca
Biohabitat	Lanik	Solar plus
Biohome	Lightenjin	Somincor
Caixiave	Macel	Sonae Arauco
Carpincasais	Materia modular	SOPSEC
Casais	Modiko	Sustentare
CEIFA coop	Mrg	T&T
CeltiCeramica	Neoturf	Termonlan
CEZERO	NZEB	Transucatas
Chatron	Oli	Umbelino Monteiro Up Wy
CIN	Osacer	Vesam
CMP	Open your business	Vidrologic
Colaborante	Oz	Viva power
Competinov	Pavigres	VPS
Jaime Silva	Perfilnorte	WSBP
Casanova	Poço	Curia tecnoparque
Designarte	Primefix	
Diera	Ramoz Catarinos Dois	
Domaino	RAR imobiliaria	
Only	RCD	
Algarve energy park	Recer	
Enerplural	Reynaers	
Eurogalva	Rikor coating solutions	
Extruplas	S+A green lab	

⁹³ <http://www.centrohabitat.net/en/associados>

10.7 EnergyIn⁹⁴

CGD Caixa Geral de Depositos
Ecotoro
EDP Energias des Portugal
EDP Starter
Enercoutim
INEGI - Instituto de Engenharia Mecanica e Gestao Industrial
ISQ Instituto de Soldadura e Qualidade
JANZ Contadores de Energia
Lusotecnia
Mit Portugal
REN Redes Energeticas Nacionais
YUNIT

10.8 AIFF

Company	Sector
A. Ferreira Pedro & Irmão	Bark (cork)
Amorim Florestal	Bark (cork)
Amorim&Irmãos	Bark (cork)
António Almeida Cortiças, S.A.	Bark (cork)
Associação Portuguesa de Cortiça – APCOR	Bark (cork)
Corticeira Amorim, SGPS	Bark (cork)
Jorge Pinto Sá	Bark (cork)
Relvas II	Bark (cork)
Sá & Irmão, S.A.	Bark (cork)
Valdemar Fernandes da Silva,S.A.	Bark (cork)
Associação das Industrias de Madeira e Mobiliário de Portugal – AIMMP	Wood
Associação para a Valorização da Floresta de Pinho – Centro Pinus	Wood

⁹⁴ <https://www.clustercollaboration.eu/cluster-organisations/energyin-competitiveness-and-technology-cluster-energy-portugal>

Europa&c Distribuição da Madeira, Lda	Wood
Fertini Lda.	Wood
Madeca, Madeiras de Caxarias, SA	Wood
MAIEQUIPA – Gestão Florestal, SA	Wood
Manuel Rodrigues da Cruz & Filhos Lda	Wood
Motivo Único SA	Wood
MOVELPARTES – Componentes para a Indústria do Mobiliário, SA	Wood
Sonae – Indústria de Revestimentos, SA	Wood
SONAE INDÚSTRIA – Produção e Comercialização de Derivados de Madeira, SA	Wood
Altri Florestal, S.A.	Pulp & paper
Associação da Indústria Papeleira – CELPA	Pulp & paper
Celbi, S.A.	Pulp & paper
Celcacia	Pulp & paper
Europa&c Cartão Ovar, S.A.	Pulp & paper
Europa&c Europa&c, S.A.	Pulp & paper
Portucel, SA	Pulp & paper
PortucelSoporcel Florestal – Sociedade de Desenvolvimento Agro-Florestal, SA	Pulp & paper
Viveiros Aliança – Empresa Produtora de Plantas, SA	Pulp & paper
Viveiros do Furadouro, Lda.	Pulp & paper
Associação de Transferência de Tecnologia – BIOCANT	R&D
Associação Nacional de Recuperação e Reciclagem de Resíduos de Embalagens de Madeira – EMBAR	R&D
Centro de Formação Profissional da Industria de Cortiça – CINCORK	R&D
Centro Tecnológico da Cortiça	R&D
Confederação dos Agricultores de Portugal – CAP	R&D

Forestis – Associação Florestal de Portugal	R&D
Forum Florestal	R&D
Instituto de Biologia Experimental e Tecnológica – iBET	R&D
Instituto de Engenharia de Sistemas e Computadores, Tecnologia e Ciência – INESC TEC	R&D
Instituto de Investigação da Floresta e Papel – RAIZ	R&D
Instituto Superior de Agronomia	R&D
ISQ	R&D
União da Floresta Mediterrânica – UNAC	R&D
Universidade de Trás-os-Montes e Alto Douro	R&D
Universidade do Porto	R&D

10.9 SMARTWASTE

AEP	ESGRA	OVO
AEPNA	European Recycling Platform	Procesl
AIMMAP	EuroSeparadora	Price Waterhouse Cooper
AMBIRUMO	FCC	Recivalongo
AMORIM	FCT	Recypolym
AOED	Ferrovial	Renascimento
APESB	FomentInvest	Savior
AVALER	HOFLE	SGS
AVE	GIntegral	Sirplaste
BSCD PORTUGAL	Hidurbe	Sociedade Pontoverde
BIO RUMO	INDAVER	SONAE
Camara Municipal de Lisoba	INEGI	SOPINAL
CITRI	Instituto politecnico de Viana do Castelo	SPI
CVR	Instituto Superior de Agronomia	Stericycle
Deloitte	INTERFILEIRAS	TNL

Eco gestus	ISQ	Tratolixo
Eco metais	Instituto Tecnico de Lisboa	Universidade do Porto
EGEO	Jeronimo Martins	Valorcar
EGF	Lena Ambiente	Veolia
Enhidrico	Lipor	
ERSAR	Maiambiente	

10.10 AIPQR

Companhia Industrial de Resinas Sintéticas, CIRES, LDA.

CUF - Químicos Industriais, S.A.

DOW Portugal, Produtos Químicos, Soc. Unipessoal, Lda.

Euroresinas Indústrias Químicas, S.A.

GALP Energia, SGPS, S.A.

Sociedade Portuguesa do Ar Líquido "ARLÍQUIDO", Lda.

AICEP Global Parques

Fase - Estudos e Projectos, S.A.

APA - Administração do Porto de Aveiro, S.A.

APDL – Administração dos Portos do Douro, Leixões e Viana do Castelo, S.A

APS – Administração dos Portos de Sines e do Algarve, S.A

APEQ - Associação Portuguesa das Empresas Químicas

Câmara Municipal de Estarreja

Câmara Municipal de Matosinhos

Câmara Municipal de Sines

ISQ - Instituto de Soldadura e Qualidade

Microprocessador - Sistemas Digitais, S.A.

Sines Tecnopólo

Universidade de Aveiro

Universidade de Coimbra

Universidade Nova de Lisboa

Universidade do Porto

Universidade de Lisboa

ISEP – Instituto Superior de Engenharia do Porto

(CIETI – Centro de Inovação em Engenharia e Tecnologia Industrial)

Repsol Polímeros, S.A.

IPS – Instituto Politécnico de Setúbal

Advanced Cyclone Systems, S.A.

A4F, Algafuel, S.A.

Greenseal Research, Lda

Omnidea, Lda

Solchemar – Fabrico e Comercialização de Produtos Químicos, Lda

11



APPENDIX B

Appendix B

Table b1: Producers of annual crops (from IFAP's directory)

Region	Company	Sector(s)
Centro	COOPERATIVA AGRICOLA DE COIMBRA, CRL	Cereals, oleaginous including corn
Centro	COOPERATIVA AGRICOLA DO CONCELHO DE MONTEMOR-O-VELHO	Cereals, oleaginous including corn
Lisboa e Vale do Tejo	AGROMAIS-ENTREPOSTO COMERCIAL AGRICOLA CRL	Cereals, oleaginous including corn
Lisboa e Vale do Tejo	CADOVA-COOPERATIVA AGRÍCOLA DO VALE DE ARRAIOLOS, CRL.	Cereals, oleaginous including corn
Lisboa e Vale do Tejo	CEREALPLUS - ORGANIZAÇÃO DE PRODUTORES DE CEREAIS S A	Cereals, oleaginous including corn
Lisboa e Vale do Tejo	GLOBALMILHO - ORGANIZAÇÃO DE PRODUTORES DE CEREAIS LDA	Cereals, oleaginous including corn
Lisboa e Vale do Tejo	SEARALTO - AGRUPAMENTO DE PRODUTOS DE CEREIAS S.A.	Cereals, oleaginous including corn
Alentejo	ALENSADO - COOPERATIVA AGRICOLA DO SADO, CRL	Cereals, oleaginous including corn
Alentejo	CERSUL - AGRUPAMENTO DE PRODUTORES DE CEREAIS DO SUL S.A.	Cereals, oleaginous including corn
Alentejo	COOPERATIVA AGRÍCOLA DE BEJA E BRINCHES , C.R.L.	Cereals, oleaginous including corn
Alentejo	COOPERATIVA AGRICOLA DE BERINGEL CRL	Cereals, oleaginous including corn
Alentejo	GLOBALQUEVA	Cereals, oleaginous including corn
Alentejo	OPCER - AGRUPAMENTO DE PRODUTORES DE CEREAIS, LDA	Cereals, oleaginous including corn
Alentejo	PROCEREAIS AGRUPAMENTO DE PRODUTORES DE CEREAIS, LDA	Cereals, oleaginous including corn
Açores	FRUTERCOOP - COOPERATIVA HORTOFRUTICULTORES ILHA TERCEIRA CRL	Flowers
Norte	COOPERATIVA AGRICOLA DO TAVORA CRL	Fruit and horticulture
Norte	FRUCAR - COMERCIO DE FRUTAS LDA.	Fruit and horticulture
Norte	FFRUTAS CRUZEIRO II - PRODUÇÃO LDA.	Fruit and horticulture
Norte	KIWI GREENSUN	Fruit and horticulture
Norte	PAM OP, LDA	Fruit and horticulture
Centro	CERFUNDÃO	Fruit and horticulture
Centro	COOPERATIVA AGRÍCOLA DE MANGUALDE CRL	Fruit and horticulture
Centro	COOPERATIVA AGRICOLA DO CONCELHO DE PORTO DE MÓS CRL	Fruit and horticulture
Centro	KIWICOOP,COOPERATIVA FRUTICOLA DA BAIRRADA CRL	Fruit and horticulture

Centro	QUINTA DO CELÃO II, LDA.	Fruit and horticulture
Lisboa e Vale do Tejo	AGROMAIS-ENTREPOSTO COMERCIAL AGRICOLA CRL	Fruit and horticulture
Lisboa e Vale do Tejo	APAVE - ORGANIZAÇÃO DE PRODUTORES AGRICOLAS DO VALE DO TEJO S.A.	Fruit and horticulture
Lisboa e Vale do Tejo	ARNEIROS DE ALMEIRIM - ORGANIZAÇÃO DE PRODUTORES DE HORTÍCOLAS S. A.	Fruit and horticulture
Lisboa e Vale do Tejo	BENAGRO - COOPERATIVA AGRÍCOLA DE BENAVENTE, CRL	Fruit and horticulture
Lisboa e Vale do Tejo	CADOVA-COOPERATIVA AGRÍCOLA DO VALE DE ARRAIOLOS, CRL.	Fruit and horticulture
Lisboa e Vale do Tejo	CAMPOTEC-COMERCIALIZACAO E CONSULTADORIA EM HORTOFRUTICOLAS SA	Fruit and horticulture
Lisboa e Vale do Tejo	CARMO & SILVÉRIO SA	Fruit and horticulture
Lisboa e Vale do Tejo	CENTRAL DE FRUTAS DO PAINHO S.A.	Fruit and horticulture
Lisboa e Vale do Tejo	COOPERATIVA AGRICOLA DO BOMBARRAL CRL	Fruit and horticulture
Lisboa e Vale do Tejo	COOPERATIVA AGRÍCOLA DOS FRUTICULTORES DO CADAVAL CRL	Fruit and horticulture
Lisboa e Vale do Tejo	COOPERFRUTAS - COOP PRODUTORES FRUTA E PROD HORTICOLAS DE ALCOBACA CRL	Fruit and horticulture
Lisboa e Vale do Tejo	CPF - CENTRO DE PRODUCAO E COMERCIALIZACAO HORTOFRUTICULA, LDA	Fruit and horticulture
Lisboa e Vale do Tejo	ECOFRUTAS - ESTACAO FRUTEIRA DA ESTREMADURA LDA	Fruit and horticulture
Lisboa e Vale do Tejo	FRUBAÇA - COOPERATIVA DE HORTOFRUTICULTORES CRL	Fruit and horticulture
Lisboa e Vale do Tejo	FRUTALMENTE, S.A.	Fruit and horticulture
Lisboa e Vale do Tejo	FRUTALVOR-CENTRAL FRUTEIRA CRL	Fruit and horticulture
Lisboa e Vale do Tejo	FRUTAS CLASSE COMÉRCIO DE FRUTAS, SA	Fruit and horticulture
Lisboa e Vale do Tejo	FRUTO MAIOR, ORGANIZAÇÃO DE PRODUTORES HORTOFRUTICOLAS LDA	Fruit and horticulture
Lisboa e Vale do Tejo	FRUTOESTE-COOPERATIVA AGRICOLA DE HORTOFRUTICULTORES DO OESTE-CRL	Fruit and horticulture
Lisboa e Vale do Tejo	FRUTUS - ESTAÇÃO FRUTEIRA DO MONTEJUNTO CRL	Fruit and horticulture
Lisboa e Vale do Tejo	GLOBALFRUT, PRODUCAO E COMERCIALIZACAO DE FRUTAS LDA	Fruit and horticulture
Lisboa e Vale do Tejo	GRANFER - PRODUTORES DE FRUTAS, CRL	Fruit and horticulture
Lisboa e Vale do Tejo	HORTAPRONTA - HORTAS DO OESTE S.A.	Fruit and horticulture
Lisboa e Vale do Tejo	HORTAS DE SANTA MARIA, S.A	Fruit and horticulture
Lisboa e Vale do Tejo	HORTOFRUTICOLAS CAMPELOS S.A.	Fruit and horticulture

Lisboa e Vale do Tejo	HORTOMELÃO - PRODUTOS HORTICULAS E FRUTOS, LDA	Fruit and horticulture
Lisboa e Vale do Tejo	MULTITOMATE - COOPERATIVA AGRÍCOLA DA CASTANHEIRA DO RIBATEJO, CRL	Fruit and horticulture
Lisboa e Vale do Tejo	MUNDIAL ROCHA - COMERCIO DE FRUTAS, SA	Fruit and horticulture
Lisboa e Vale do Tejo	NARC FRUTAS - COOPERATIVA FRUTICULTORES HORT. REGIAO ALCOBACA CRL	Fruit and horticulture
Lisboa e Vale do Tejo	O MELRO.OP, S.A.	Fruit and horticulture
Lisboa e Vale do Tejo	OBIROCHA - COOPERATIVA DE FRUTICULTORES DA REGIAO DE OBIDOS CRL	Fruit and horticulture
Lisboa e Vale do Tejo	PRIMOHORTA - SOCIEDADE DE PRODUTORES DE HORTICOLAS LDA	Fruit and horticulture
Lisboa e Vale do Tejo	PRIMORES DO OESTE, SA	Fruit and horticulture
Lisboa e Vale do Tejo	PROVAPE - COOPERATIVA AGRICOLA DO VALE DA PEDRA CRL	Fruit and horticulture
Lisboa e Vale do Tejo	TOMARAIA - ORGANIZAÇÃO DE PRODUTORES DE HORTOFRUTICOLAS S.A.	Fruit and horticulture
Lisboa e Vale do Tejo	TOMATAZA - ORGANIZAÇÃO DE PRODUTORES DE HORTOFRUTÍCOLAS, S.A.	Fruit and horticulture
Lisboa e Vale do Tejo	TOMATERRA - ORGANIZAÇÃO DE PRODUTORES DE TOMATE CRL	Fruit and horticulture
Lisboa e Vale do Tejo	TORRIBA - ORGANIZACAO DE PRODUTORES DE HORTOFRUTICOLAS S.A.	Fruit and horticulture
Alentejo	ALENSADO - COOPERATIVA AGRICOLA DO SADO, CRL	Fruit and horticulture
Alentejo	ALENTEJANICES COM TOMATE	Fruit and horticulture
Alentejo	FRUTECO - FRUTICULTURA INTEGRADA LDA	Fruit and horticulture
Alentejo	LUSOMORANGO - ORGANIZACAO DE PRODUTORES DE PEQUENOS FRUTOS SA	Fruit and horticulture
Algarve	FRUSOAL - FRUTAS SOTAVENTO ALGARVE LDA	Fruit and horticulture
Algarve	FRUTALGOZ - SOCIEDADE AGRICOLA DO ALGOZ LDA	Fruit and horticulture
Algarve	MADRE FRUTA - CENTRO DE VENDAS HORTOFRUTICOLAS LDA	Fruit and horticulture
Lisboa e Vale do Tejo	AGROMAIS-ENTREPOSTO COMERCIAL AGRICOLA CRL	Potato
Lisboa e Vale do Tejo	TORRIBA - ORGANIZACAO DE PRODUTORES DE HORTOFRUTICOLAS S.A.	Potato
Centro	COOPERATIVA AGRICOLA DO CONCELHO DE MONTEMOR-O-VELHO	Rice
Lisboa e Vale do Tejo	ASSETARROZ, CRL	Rice
Lisboa e Vale do Tejo	BENAGRO - COOPERATIVA AGRÍCOLA DE BENAVENTE, CRL	Rice
Lisboa e Vale do Tejo	ORIVARZEA ORIZICULTORES DO RIBATEJO S.A	Rice

Alentejo	APARROZ AGRUPAMENTO DE PRODUTORES DE ARROZ DO VALE DO SADO LDA	Rice
Alentejo	APORIZA	Rice
Alentejo	SOPRASADO	Rice
Lisboa e Vale do Tejo	PORTARROZ - Agrupamento de Produtores de Arroz, ACE	Rice, cereals, oleaginous including corn
Lisboa e Vale do Tejo	TERRAMILHO - AGRUPAMENTO DE PRODUTORES DE CEREAIS LDA	Rice, cereals, oleaginous including corn

Table b2: Producers of fruit (from IFAP's directory)

Region	Company	Sector(s)
Açores	COOPERATIVA AGRICOLA AÇOREANA HORTOFRUTICULTORES	Bananas
Açores	FRUTERCOOP - COOPERATIVA HORTOFRUTICULTORES ILHA TERCEIRA CRL	Bananas
Norte	COOPERATIVA AGRICOLA DO TAVORA CRL	Fruit and horticulture
Norte	FRUCAR - COMERCIO DE FRUTAS LDA.	Fruit and horticulture
Norte	FFRUTAS CRUZEIRO II - PRODUÇÃO LDA.	Fruit and horticulture
Norte	KIWI GREENSUN	Fruit and horticulture
Norte	PAM OP, LDA	Fruit and horticulture
Centro	CERFUNDÃO	Fruit and horticulture
Centro	COOPERATIVA AGRÍCOLA DE MANGUALDE CRL	Fruit and horticulture
Centro	COOPERATIVA AGRICOLA DO CONCELHO DE PORTO DE MÓS CRL	Fruit and horticulture
Centro	KIWICOOP, COOPERATIVA FRUTICOLA DA BAIRRADA CRL	Fruit and horticulture
Centro	QUINTA DO CELÃO II, LDA.	Fruit and horticulture
Lisboa e Vale do Tejo	AGROMAIS-ENTREPOSTO COMERCIAL AGRICOLA CRL	Fruit and horticulture
Lisboa e Vale do Tejo	APAVE - ORGANIZAÇÃO DE PRODUTORES AGRICOLAS DO VALE DO TEJO S.A.	Fruit and horticulture
Lisboa e Vale do Tejo	ARNEIROS DE ALMEIRIM - ORGANIZAÇÃO DE PRODUTORES DE HORTÍCOLAS S. A.	Fruit and horticulture
Lisboa e Vale do Tejo	BENAGRO - COOPERATIVA AGRÍCOLA DE BENAVENTE, CRL	Fruit and horticulture
Lisboa e Vale do Tejo	CADOVA-COOPERATIVA AGRÍCOLA DO VALE DE ARRAIOLOS, CRL.	Fruit and horticulture

Lisboa e Vale do Tejo	CAMPOTEC-COMERCIALIZACAO E CONSULTADORIA EM HORTOFRUTICOLAS SA	Fruit and horticulture
Lisboa e Vale do Tejo	CARMO & SILVÉRIO SA	Fruit and horticulture
Lisboa e Vale do Tejo	CENTRAL DE FRUTAS DO PAINHO S.A.	Fruit and horticulture
Lisboa e Vale do Tejo	COOPERATIVA AGRICOLA DO BOMBARRAL CRL	Fruit and horticulture
Lisboa e Vale do Tejo	COOPERATIVA AGRÍCOLA DOS FRUTICULTORES DO CADAVAL CRL	Fruit and horticulture
Lisboa e Vale do Tejo	COOPERFRUTAS - COOP PRODUTORES FRUTA E PROD HORTICOLAS DE ALCOBACA CRL	Fruit and horticulture
Lisboa e Vale do Tejo	CPF - CENTRO DE PRODUCAO E COMERCIALIZACAO HORTOFRUTICULA, LDA	Fruit and horticulture
Lisboa e Vale do Tejo	ECOFRUTAS - ESTACAO FRUTEIRA DA ESTREMADURA LDA	Fruit and horticulture
Lisboa e Vale do Tejo	FRUBAÇA - COOPERATIVA DE HORTOFRUTICULTORES CRL	Fruit and horticulture
Lisboa e Vale do Tejo	FRUTALMENTE, S.A.	Fruit and horticulture
Lisboa e Vale do Tejo	FRUTALVOR-CENTRAL FRUTEIRA CRL	Fruit and horticulture
Lisboa e Vale do Tejo	FRUTAS CLASSE COMÉRCIO DE FRUTAS, SA	Fruit and horticulture
Lisboa e Vale do Tejo	FRUTO MAIOR, ORGANIZAÇÃO DE PRODUTORES HORTOFRUTICOLAS LDA	Fruit and horticulture
Lisboa e Vale do Tejo	FRUTOESTE-COOPERATIVA AGRICOLA DE HORTOFRUTICULTORES DO OESTE-CRL	Fruit and horticulture
Lisboa e Vale do Tejo	FRUTUS - ESTAÇÃO FRUTEIRA DO MONTEJUNTO CRL	Fruit and horticulture
Lisboa e Vale do Tejo	GLOBALFRUT, PRODUCAO E COMERCIALIZACAO DE FRUTAS LDA	Fruit and horticulture
Lisboa e Vale do Tejo	GRANFER - PRODUTORES DE FRUTAS, CRL	Fruit and horticulture
Lisboa e Vale do Tejo	HORTAPRONTA - HORTAS DO OESTE S.A.	Fruit and horticulture
Lisboa e Vale do Tejo	HORTAS DE SANTA MARIA, S.A	Fruit and horticulture
Lisboa e Vale do Tejo	HORTOFRUTICOLAS CAMPELOS S.A.	Fruit and horticulture
Lisboa e Vale do Tejo	HORTOMELÃO - PRODUTOS HORTICULAS E FRUTOS, LDA	Fruit and horticulture
Lisboa e Vale do Tejo	MULTITOMATE - COOPERATIVA AGRÍCOLA DA CASTANHEIRA DO RIBATEJO, CRL	Fruit and horticulture
Lisboa e Vale do Tejo	MUNDIAL ROCHA - COMERCIO DE FRUTAS, SA	Fruit and horticulture
Lisboa e Vale do Tejo	NARC FRUTAS - COOPERATIVA FRUTICULTORES HORT. REGIAO ALCOBACA CRL	Fruit and horticulture

Lisboa e Vale do Tejo	O MELRO.OP, S.A.	Fruit and horticulture
Lisboa e Vale do Tejo	OBIROCHA - COOPERATIVA DE FRUTICULTORES DA REGIAO DE OBIDOS CRL	Fruit and horticulture
Lisboa e Vale do Tejo	PRIMOHORTA - SOCIEDADE DE PRODUTORES DE HORTICOLAS LDA	Fruit and horticulture
Lisboa e Vale do Tejo	PRIMORES DO OESTE, SA	Fruit and horticulture
Lisboa e Vale do Tejo	PROVAPE - COOPERATIVA AGRICOLA DO VALE DA PEDRA CRL	Fruit and horticulture
Lisboa e Vale do Tejo	TOMARAIA - ORGANIZAÇÃO DE PRODUTORES DE HORTOFRUTICOLAS S.A.	Fruit and horticulture
Lisboa e Vale do Tejo	TOMATAZA - ORGANIZAÇÃO DE PRODUTORES DE HORTOFRUTÍCOLAS, S.A.	Fruit and horticulture
Lisboa e Vale do Tejo	TOMATERRA - ORGANIZAÇÃO DE PRODUTORES DE TOMATE CRL	Fruit and horticulture
Lisboa e Vale do Tejo	TORRIBA - ORGANIZACAO DE PRODUTORES DE HORTOFRUTICOLAS S.A.	Fruit and horticulture
Alentejo	ALENSADO - COOPERATIVA AGRICOLA DO SADO, CRL	Fruit and horticulture
Alentejo	ALENTEJANICES COM TOMATE	Fruit and horticulture
Alentejo	FRUTECO - FRUTICULTURA INTEGRADA LDA	Fruit and horticulture
Alentejo	LUSOMORANGO - ORGANIZACAO DE PRODUTORES DE PEQUENOS FRUTOS SA	Fruit and horticulture
Algarve	FRUSOAL - FRUTAS SOTAVENTO ALGARVE LDA	Fruit and horticulture
Algarve	FRUTALGOZ - SOCIEDADE AGRICOLA DO ALGOZ LDA	Fruit and horticulture
Algarve	MADRE FRUTA - CENTRO DE VENDAS HORTOFRUTICOLAS LDA	Fruit and horticulture
Norte	AMENDOACOOP - COOPERATIVA DE PRODUTORES DETORRE DE MONCORVO, CRL	Shell fruit
Norte	COOP.AGRICOLA PRODUTORES DE AMENDOA DE TRÁS OS MONTES E ALTO DOURO CRL	Shell fruit
Norte	COOPAÇOS - COOPERATIVA AGRÍCOLA DE VALPAÇOS CRL.	Shell fruit
Norte	COOPERATIVA AGRICOLA DE PENELA DA BEIRA CRL	Shell fruit
Norte	LCN - COOPERATIVA DOS LAVRADORES DO CENTRO E NORTE, CRL	Shell fruit
Norte	SOUTOS OS CAVALEIROS, CRL	Shell fruit
Norte	BFRUIT	Small fruit

Table b3: Producers of olive oil (from IFAP's directory)

Region	Company	Sector(s)
Alentejo	COOPERATIVA AGRÍCOLA DE BEJA E BRINCHES , C.R.L.	Olive oil
Alentejo	COOPERATIVA AGRICOLA DE ERVEDAL E FIGUEIRA E BARROS CRL	Olive oil
Alentejo	COOPERATIVA AGRICOLA DE MOURA E BARRANCOS CRL	Olive oil

Table b4: Producers of wine (from IFAP's directory)

Region	Company	Sector(s)
Norte	ADEGA COOPERATIVA REGIONAL DE MONÇÃO CRL	Wine
Norte	COOPERATIVA AGRICOLA DO TAVORA CRL	Wine
Lisboa e Vale do Tejo	ADEGA COOPERATIVA DE PALMELA	Wine
Lisboa e Vale do Tejo	ADEGA COOPERATIVA DE SAO MAMEDE DA VENTOSA CRL	Wine
Alentejo	ADEGA COOPERATIVA DE VIDIGUEIRA,CUBA E ALVITO CRL	Wine
Alentejo	ADEGA COOPERATIVA DE BORBA	Wine

Table b5: Producers of covine meat (from IFAP's directory)

Region	Company	Sector(s)
Norte	CARNAROUQUESA AGRUPAMENTO PRODUTORES BOVINOS RACA AROUQUESA CRL	Bovine meat
Norte	COOPERATIVA AGRICOLA DE BOTICAS CAPOLIB CRL	Bovine meat and apiculture
Norte	COOPERATIVA AGRICOLA DE VILA REAL CRL	Bovine meat
Norte	COOPERATIVA AGRO-PECUARIA MIRANDESA CRL	Bovine meat
Lisboa e Vale do Tejo	AGRUPCARNE - AGRUPAMENTO DE PRODUTORES DE CARNE DE BOVINO S A	Bovine meat
Lisboa e Vale do Tejo	ALIBEEF - AGRUPAMENTO DE PRODUTORES DE BOVINOS, OVINOS E CAPRINOS CRL	Bovine and ovine meat
Lisboa e Vale do Tejo	BOVIBRAVO AGRUPAMENTO DE PRODUTORES DE BOVINOS DE RACA BRAVA DE LIDE LDA	Bovine meat
Lisboa e Vale do Tejo	J.M.P.C., S.A.	Bovine meat

Alentejo	A P R S - AGRUPAMENTO DE PRODUTORES DA REGIAO SUL , S A	Bovine and ovine meat
Alentejo	CARNALENTEJANA-AGRUPAMENTO PROD BOVINOS RACA ALENTEJANA S.A.	Bovine and ovine meat
Alentejo	ELIPEC - AGRUPAMENTO DE PRODUTORES DE PECUÁRIA S.A.	Bovine, ovine and caprine meat
Alentejo	NATUR-AL-CARNES - AGRUPAMENTO PRODUTORES PECUARIOS NORTE ALENTEJANO S.A.	Bovine and ovine meat
Alentejo	PROMERT - AGRUPAMENTO DE PRODUTORES DE BOVINOS MERTOLENGOS, SA	Bovine meat

Table b6: Producers of caprina or ovine meat (from IFAP's directory)

Region	Company	Sector(s)
Norte	COOPERATIVA DE PRODUTORES DE CABRITO DA RACA SERRANA CRL	Caprine meat
Norte	OVITEQ COOPERATIVA DOS PRODUTORES DE CARNE DE OVINOS DA TERA QUENTE CRL	Ovine meat
Centro	ESTRELACOOP - COOPERATIVA DOS PRODUTORES DE QUEIJO SERRA DA ESTRELA CRL	Ovine meat
Lisboa e Vale do Tejo	ALIBEEF - AGRUPAMENTO DE PRODUTORES DE BOVINOS, OVINOS E CAPRINOS CRL	Bovine and ovine meat
Alentejo	A P R S - AGRUPAMENTO DE PRODUTORES DA REGIAO SUL , S A	Bovine and ovine meat
Alentejo	CARNALENTEJANA-AGRUPAMENTO PROD BOVINOS RACA ALENTEJANA S.A.	Bovine and ovine meat
Alentejo	ELIPEC - AGRUPAMENTO DE PRODUTORES DE PECUÁRIA S.A.	Bovine, ovine and caprine meat
Alentejo	NATUR-AL-CARNES - AGRUPAMENTO PRODUTORES PECUARIOS NORTE ALENTEJANO S.A.	Bovine and ovine meat
Alentejo	PECSÃOMIGUEL - AGRUPAMENTO DE PRODUTORES DO ALTO ALENTEJO, LDA	Ovine meat

Table b7: Producers of swine meat (from IFAP's directory)

Region	Company	Sector(s)
Lisboa e Vale do Tejo	AGRUPALTO-AGRUPAMENTO DE PRODUTORES AGROPEUCARIOS , SA	Swine meat
Lisboa e Vale do Tejo	ALIGRUPO - AGRUPAMENTO DE PRODUTORES DE SUINOS CRL	Swine meat
Alentejo	ALPORC	Swine meat

Table b8: Producers of poultry meat (from IFAP's directory)

Region	Company	Sector(s)
Lisoba e Tejo	Avibom – Grupo Valouro	Poultry meat
Centro	Lusiaves	Poultry meat
Lisboa e Vale do Tejo	Zezerovo	Eggs

Table b9: Producers of dairy products (from IFAP's directory)

Region	Company	Sector(s)
Norte	AGROS	Milk and dairy products
Norte	LEICARCOOP	Milk and dairy products
Norte	PROLEITE	Milk and dairy products
Centro	LACTICOOP-UNIAO COOPERATIVAS PRODUTORES LEITE ENTRE DOURO MONDEGO, UCRL	Milk and dairy products

Table b10: Fisheries

Company	Town	Region	Turnover (Euro)	Employees	Sector
PESCASIM - COMÉRCIO E INDUSTRIA DE PASCAS, LDA	Ponta Delgada	Açores	2 208 069	7	Sea fishing
SOCIEDADE DE PESCA NOVA HORIZONTE, LDA.	Ilhavo	Centro	2 178 828	59	Sea fishing
ACUINOVA - ACTIVIDADES PISCÍCOLAS, S.A.	Mira	Centro	2 171 004	163	Aquaculture in salt and brackish waters
STOLT SEA FARM (PORTUGAL) PISCICULTURA, SA.	Cantanhede	Centro	2 065 261	12	Aquaculture in salt and brackish waters
INPESCOSTALUZ, UNIPessoal, LDA	V. Real Sto António	Algarve	2 040 614	24	Sea fishing
PASCAS BALAYO, LDA.	Matosinhos	Norte	1 914 084	20	Sea fishing
PESCARIAS CAYON & GARCIA, LDA.	Viana do Castelo	Norte	1 733 613	4	Sea fishing
ABÍLIO SANTOS - SOCIEDADE DE PESCA, UNIPessoal LDA	Loulé	Algarve	1 622 599	16	Sea fishing
TORRES & GAGO - SOCIEDADE DE PASCAS, LDA.	Vila Nova Cerveira	Norte	1 600 973		Sea fishing
SIMPLESMENTE MAR, LDA.	Póvoa de Varzim	Norte	1 567 179	48	Sea fishing
ANTÓNIO A. PIRES COELHO, HERDEIROS	Oeiras	Lisboa e Vale do Tejo	1 562 245	18	Sea fishing

PAPÔA - EMPRESA DE PESCA, LDA.	Peniche	Centro	1 517 280	24	Sea fishing
SOCIEDADE DE PESCA NUNO PEDRO, LDA	Sesimbra	Lisboa e Vale do Tejo	1 485 544	22	Sea fishing
PESCRUL - SOCIEDADE DE PESCA DE CRUSTÁCEOS, S.A.	Olhão	Algarve	1 463 267	7	Sea fishing
ALBAMAR - SOCIEDADE DE PESCA, LDA.	Aveiro	Centro	1 339 365	20	Sea fishing
PESCAS ROTA DO VENTO, LDA.	Matosinhos	Norte	1 321 296	14	Sea fishing
BPL - BALEEIRA PESCAS, LDA.	Caminha	Norte	1 307 379	35	Sea fishing
SADIMAR - SOCIEDADE EXPORTADORA E AFINADORA DE MARISCOS, LDA	Setúbal	Lisboa e Vale do Tejo	1 285 562	6	Aquaculture in fresh water
PESCARIAS GONZALEZ PARADA, LDA.	Viana do Castelo	Norte	1 281 239	26	Sea fishing
JULIO L.PEREIRA,HERDEIRO DE EMELIANO F. PEREIRA & OUTROS, LDA	V. Real Sto António	Algarve	1 214 143	20	Sea fishing
PESCARIAS RIO NOVO DO PRINCIPE, LDA.	Ilhavo	Centro	1 187 978	38	Sea fishing
PISCICULTURA DO VALE DO LAMA,LDA	Lagos	Algarve	1 162 856	10	Aquaculture in salt and brackish waters
PINEIRO & CALVAR, LDA	Matosinhos	Norte	1 130 793	10	Sea fishing
PESCAMARTA-UNIPessoal, LDA	Matosinhos	Norte	1 083 698	9	Sea fishing
LUIS & PINHAL, LDA.	Sesimbra	Lisboa e Vale do Tejo	1 069 283	21	Sea fishing
PORTELAPESCA, LDA	Viana do Castelo	Norte	1 057 927	1	Sea fishing
VIDAS NAVEGANTES LDA	Póvoa de Varzim	Norte	1 035 116	48	Sea fishing
TENSI PESCA, LDA.	Matosinhos	Norte	1 029 321		Sea fishing
EMPRESA DE PESCA RIBEIRO-MAR, LDA.	Matosinhos	Norte	1 019 210	7	Sea fishing
SOCIEDADE DE PESCA INFANTE, LDA.	Olhão	Algarve	1 015 335	14	Sea fishing

Table b11: Chemical industry

Company	Town	Region	Turnover (Euro)	Employees	Sector
RESPOL - RESINAS, S.A.	Leiria	Centro	49 399 341	92	Manufacture of plastics in primary forms
BRESFOR - INDÚSTRIA DO FORMOL, S.A.	Nelas	Centro	48 902 366	44	Manufacture of other organic basic chemicals, n.e.
SELENIS PORTUGAL, S.A.	Portalegre	Centro	47 648 467	42	Manufacture of plastics in primary forms
RESIQUIMICA - RESINAS QUIMICAS, S.A.	Sintra	Lisboa e Vale do Tejo	46 297 520	110	Manufacture of plastics in primary forms
LINDE SAÚDE, LDA.	Maia	Norte	43 134 876	185	Manufacture of industrial gases
EURO-YSER - PRODUTOS QUÍMICOS, S.A.	Aveiro	Centro	40 789 560	81	Manufacture of resins and their derivatives
JODEL - PRODUTOS QUÍMICOS, S.A.	Azambuja	Lisboa e Vale do Tejo	35 782 915	208	Manufacture of soap, detergents and glycerol
LINDE PORTUGAL, LDA	Lisboa	Lisboa e Vale do Tejo	35 057 262	156	Manufacture of industrial gases
NOVA AP - FÁBRICA DE NITRATO DE AMÓNIO DE PORTUGAL, S.A.	Oeiras	Lisboa e Vale do Tejo	34 925 651	55	Manufacture of fertilizers, nitrogen compounds and nitrogen compounds
CIN - INDÚSTRIA, S.A	Maia	Norte	34 887 594	82	Manufacture of paints (other than printing), varnishes, mastics and similar products
TINTAS ROBBIALAC, S.A.	Loures	Lisboa e Vale do Tejo	33 972 928	289	Manufacture of paints (other than printing), varnishes, mastics and similar products
PRAXAIR PORTUGAL GASES, S.A	Maia	Norte	31 132 334	57	Manufacture of industrial gases
SIKA PORTUGAL - PRODUTOS CONSTRUÇÃO E INDÚSTRIA, S.A	Vila Nova de Gaia	Norte	30 097 634	112	Manufacture of paints (other than printing), varnishes, mastics and similar products
DIVERSEY PORTUGAL - SISTEMAS DE HIGIENE E LIMPEZA, UNIPessoal, LDA	Sintra	Lisboa e Vale do Tejo	29 855 436	59	Manufacture of soap, detergents and glycerol
BIOVEGETAL - COMBUSTÍVEIS BIOLÓGICOS E VEGETAIS, S.A	Vila Franca de Xira	Lisboa e Vale do Tejo	29 506 843	33	Manufacture of biodiesel
MULTIFLOW - PRODUTOS DE HIGIENE E LIMPEZA, S.A.	Vila Franca de Xira	Lisboa e Vale do Tejo	27 479 477	135	Manufacture of perfumes, cosmetic and toilet preparations
BARBOT - INDÚSTRIA DE TINTAS, S.A.	Vila Nova de Gaia	Norte	26 857 909	172	Manufacture of paints (other than printing), varnishes, mastics and similar products
TINTAS TITAN, S.A.	Maia	Norte	26 612 329	138	Manufacture of paints (other than printing), varnishes, mastics and similar products

TINTAS DYRUP, S.A.	Loures	Lisboa e Vale do Tejo	24 535 470	162	Manufacture of paints (other than printing), varnishes, mastics and similar products
PREVINIL - EMPRESA PREPARADORA DE COMPOSTOS VINILICOS, S.A.	Vila Franca de Xira	Lisboa e Vale do Tejo	23 190 360	29	Manufacture of plastics in primary forms
GASIN II - GASES INDUSTRIAIS UNIPESOAAL, LDA	Matosinhos	Norte	20 362 207	50	Manufacture of industrial gases
POLIVERSAL - PLASTICOS E TECNOLOGIA, S.A.	Lisboa	Lisboa e Vale do Tejo	18 806 315	34	Manufacture of plastics in primary forms
SUN CHEMICAL PORTUGAL - TINTAS GRÁFICAS, UNIPESOAAL, LDA	Vila Nova de Gaia	Norte	18 488 367	34	Manufacture of printing inks
UNITED RESINS - PRODUÇÃO DE RESINAS S.A	Figueira da Foz	Centro	18 197 415	41	Manufacture of resins and their derivatives
SOMAPLA - SOCIEDADE INDUSTRIAL DE MATERIAS PLÁSTICAS, LDA.	Lousada	Norte	17 650 499	47	Manufacture of plastics in primary forms
RESIBRAS - COMPANHIA PORTUGUESA DE RESINAS PARA ABRASIVOS, S.A.	Palmela	Lisboa e Vale do Tejo	17 195 706	26	Manufacture of plastics in primary forms
SOPAC - SOCIEDADE PRODUTORA DE ADUBOS COMPOSTOS, S.A.	Setúbal	Lisboa e Vale do Tejo	16 756 214	104	Manufacture of fertilizers, nitrogen compounds and nitrogen compounds
VALENTE & RIBEIRO, LDA	Alcanena	Lisboa e Vale do Tejo	15 214 853	36	Manufacture of paints (other than printing), varnishes, mastics and similar products
COMPOGAL - INDÚSTRIA DE POLÍMEROS, S.A.	Leiria	Centro	14 842 510	29	Manufacture of plastics in primary forms
SPECIALTY MINERALS (PORTUGAL) - ESPECIALIDADES MINERAIS, S.A	Figueira da Foz	Centro	14 109 400	9	Manufacture of other inorganic basic chemicals
ORICA MINING SERVICES PORTUGAL, S.A.	Lisboa	Lisboa e Vale do Tejo	13 959 734	51	Manufacture of explosives and pyrotechnic articles



<http://biconsortium.eu>

Bio-based Industries Consortium

European Forestry House | Rue du Luxembourg 66 | B-1000 Brussels | Belgium
info@biconsortium.eu